

***Wholesale Carrier
EVPL
Interconnect Guide***
Updated October 30th, 2020

Ethernet Virtual Private line Interconnect Guide

Introduction

The purpose of this guide is to illustrate how the each new EVPL Metro Ethernet Network (MEN) is configured. Included are updates we have implemented to consolidate their coverage where possible. The goal is to increase understanding of the MENs and provide recommended Interconnect points where a carrier may place an NNI and have the ability to service an entire MEN.

Naming Conventions

EVPL

Our ILEC-offered Ethernet Virtual Private Line service offered in legacy CenturyTel and Embarq territories. The service was formerly tariffed by the ILECs but was recently granted forbearance, giving CenturyLink additional flexibility to offer EVPL service on a more competitive basis.

EVPL Cloud

This describes how serving wire centers are grouped to form Ethernet service territories. Historically, the network was divided up into serving areas based on geographic, regulatory, or technical criteria.

EVPL MENS

Metro Ethernet Networks – Are new coverage areas made up of one or more EVPL Clouds that have been interconnected to enhance their marketability. A single aggregation point (NNI) can serve the entirety of these new areas.

Ethernet Virtual Private line Interconnect Guide

About Carrier Interconnection

What is Carrier Interconnection?

Wholesale Carrier customers desire to buy Local Access from ILECs such as CenturyLink to complete their network solutions usually on their own IP networks. In order to use Local Access using switched Ethernet, customers must first purchase an “Aggregation UNI” (User Network Interface) or “NNI/ENNI” (Network-to-Network Interface / Extended Network-to-Network Interface), to be able to route their end-user “EVCs” (Ethernet Virtual Connection) to their IP gateways.

When evaluating whether and where to buy Local Access Interconnects, these carriers must develop their own business cases that demonstrate the benefits in investing in such an Aggregation UNI or NNI/ENNI. They must often consider the market(s) served, the market size, the potential business, and then compare those factors the cost of the Interconnect.

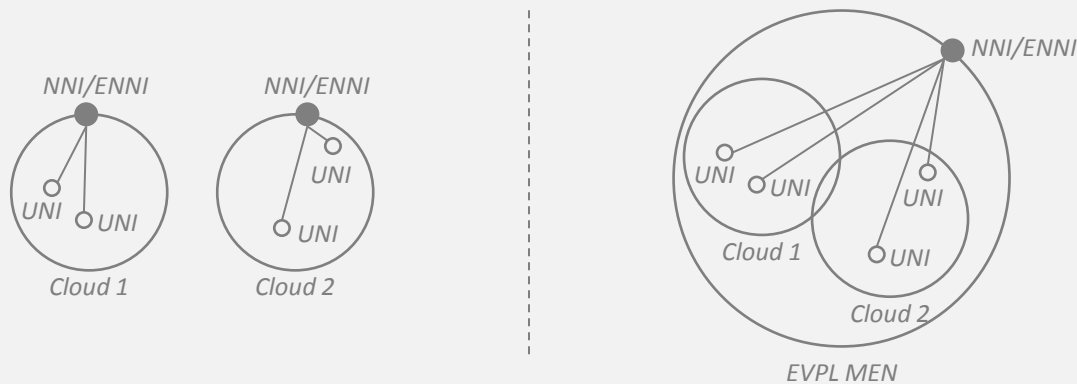
What are CenturyLink’s solutions for Carrier Interconnection?

CenturyLink has had great success serving our large metropolitan areas covered under our MOE product (Metro Optical Ethernet). This product however does not cover all of our footprint. Another product, acquired from legacy companies, fills that gap in the form of EVPL (Ethernet Virtual Private Line). EVPL performs very similarly, and in some cases identical to the MOE product.

Challenges with CenturyLink’s EVPL Carrier Interconnection

CenturyLink’s legacy territories (Embarq and CenturyTel) are often rural in nature, and in many instances surround a metropolitan area rather than penetrate into the urban framework of the city itself the city itself.

With the creation of the EVPL MENs, CenturyLink was successful in consolidating many of the EVPL Clouds into EVPL MENs. Over time, we expect the coverage area of each MEN to be larger which, will make interconnection an easier decision for Wholesale Carriers.



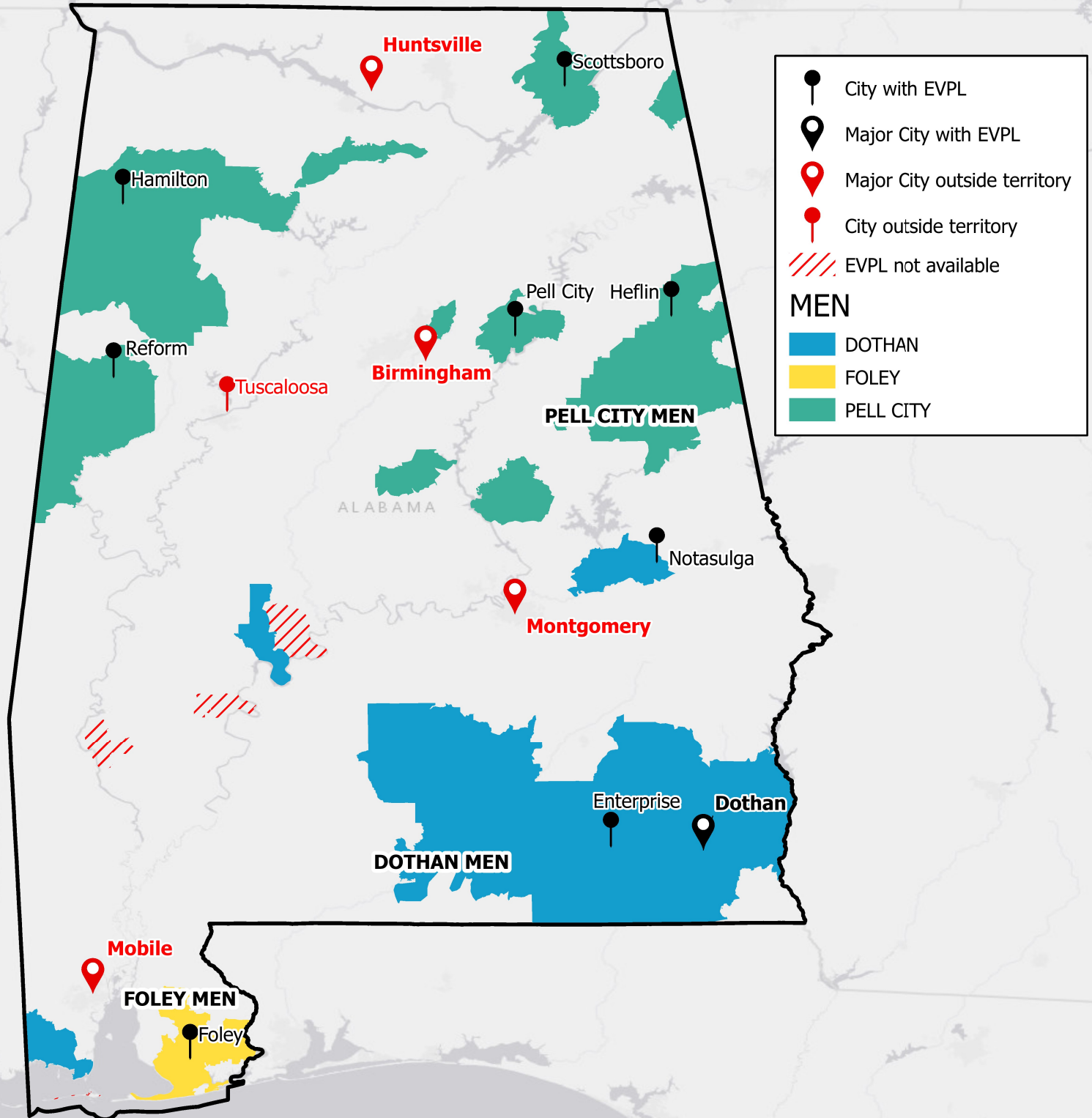
Where to Interconnect in Alabama

Dothan MEN, Foley MEN
&
Pell City MEN

Summary:

-Alabama has 3 EVPL MENs spanning 4 LATAs and 100 wire-centers equipped for Ethernet

-LATAs in these MENs are 476, 477, 478, and 480

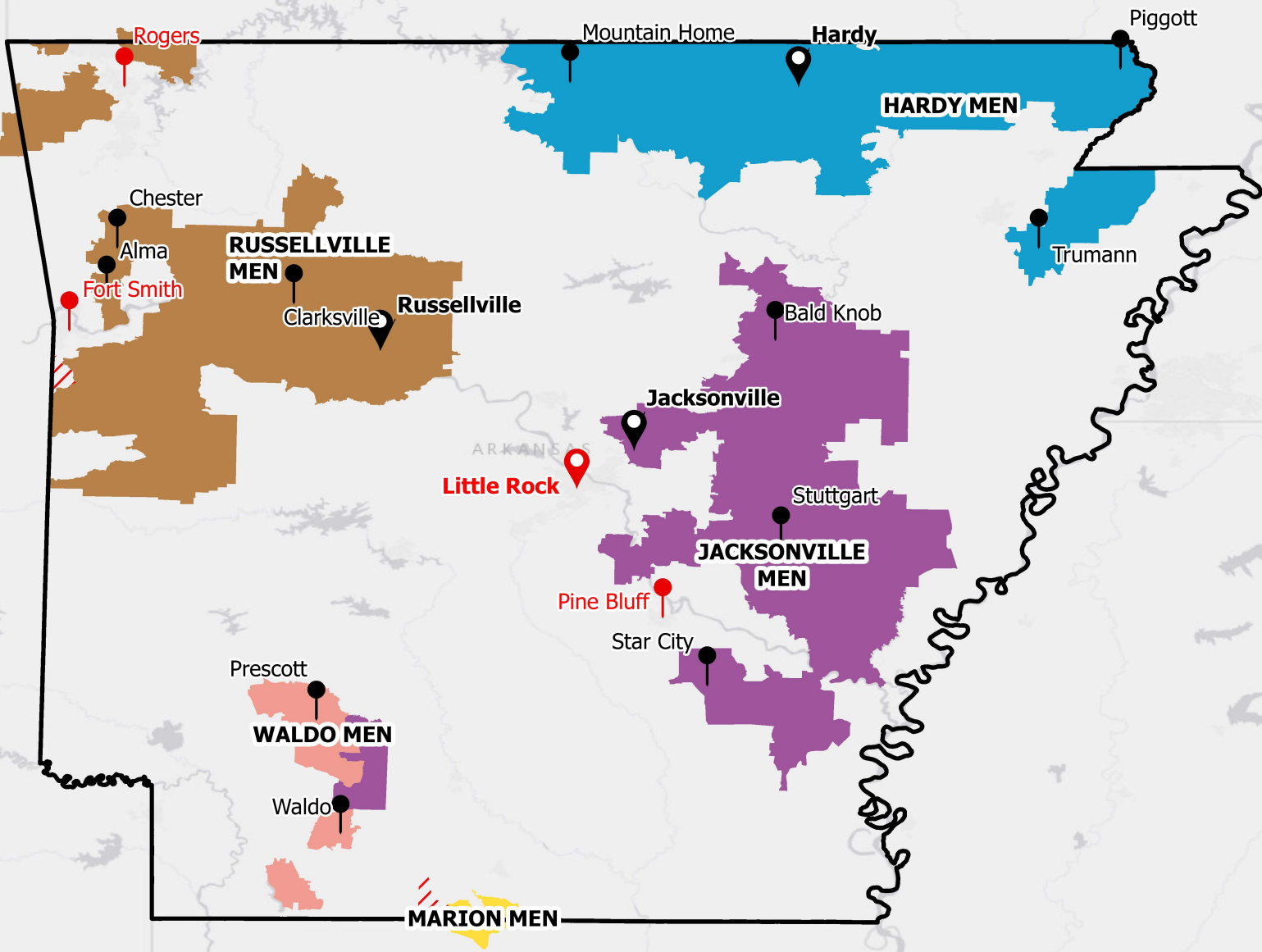


Where to Interconnect in Arkansas

Hardy MEN, Jacksonville MEN, Marion MEN, Russellville MEN & Waldo MEN

Summary:

- Arkansas has 5 EVPL MENs spanning 3 LATAs and 125 wire-centers equipped for Ethernet
- LATAs in these Clouds are 526, 528 and 530



	Major City with EVPL		City outside territory	MEN	
	City with EVPL		MOE territory		HARDY
	Major City outside territory		EVPL not available		JACKSONVILLE
					MARION
					RUSSELLVILLE
					WALDO



INTERNAL USE ONLY

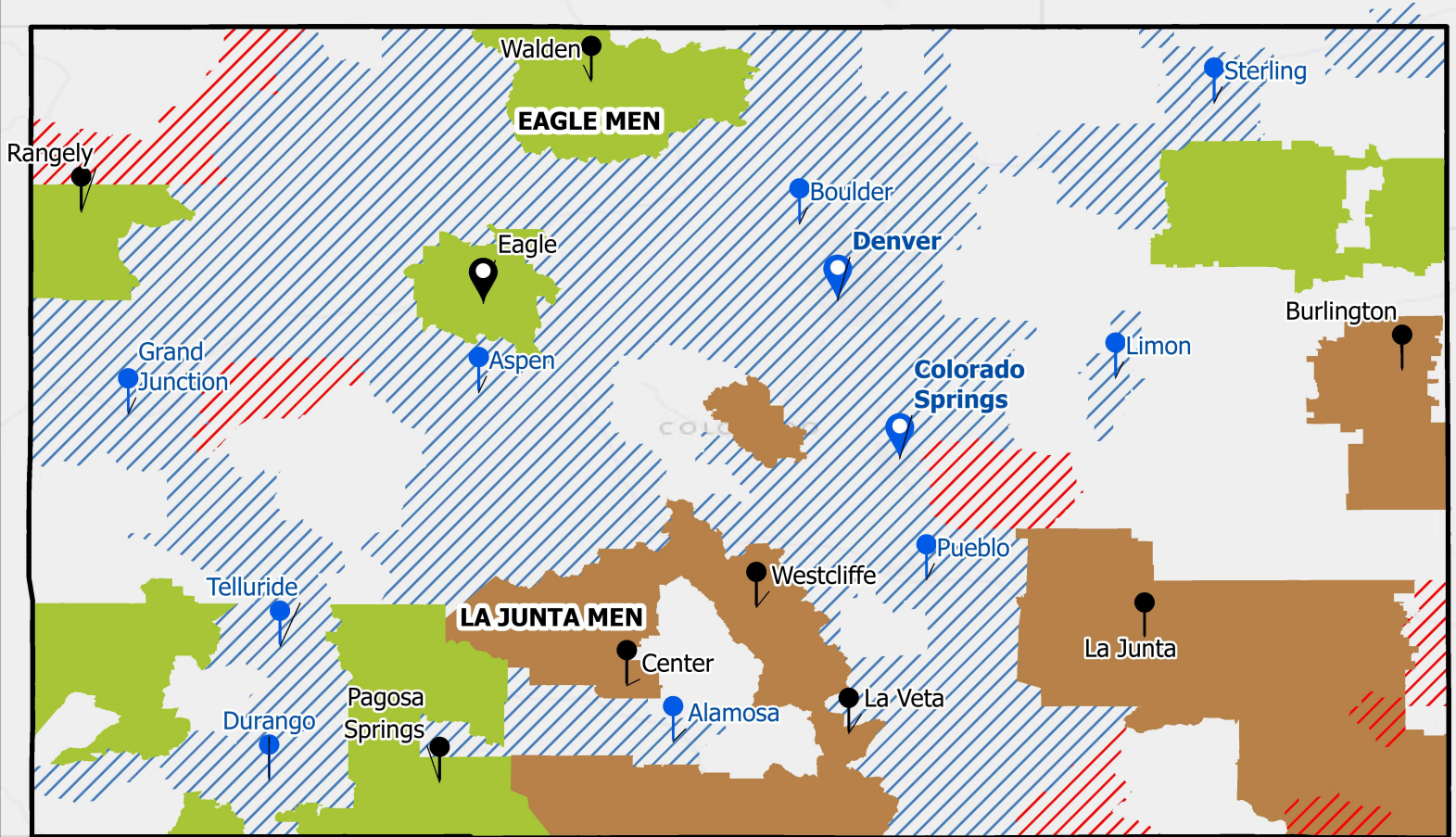
THIS MAP DATA IS FOR INTERNAL LUMEN USE ONLY AND IS NOT TO BE DISSEMINATED OUTSIDE OF LUMEN WITHOUT AUTHORIZATION FROM RISK MANAGEMENT. DISSEMINATION OF THIS DATA OUTSIDE OF LUMEN WITHOUT AUTHORIZATION WILL BE CONSIDERED A VIOLATION OF COMPANY POLICY.

Where to Interconnect in Colorado

Eagle MEN & La Junta MEN

Summary:

- Colorado has 2 EVPL MENs spanning 2 LATAs and 50 wire-centers equipped for Ethernet
- LATAs in these MENs are 656 and 658



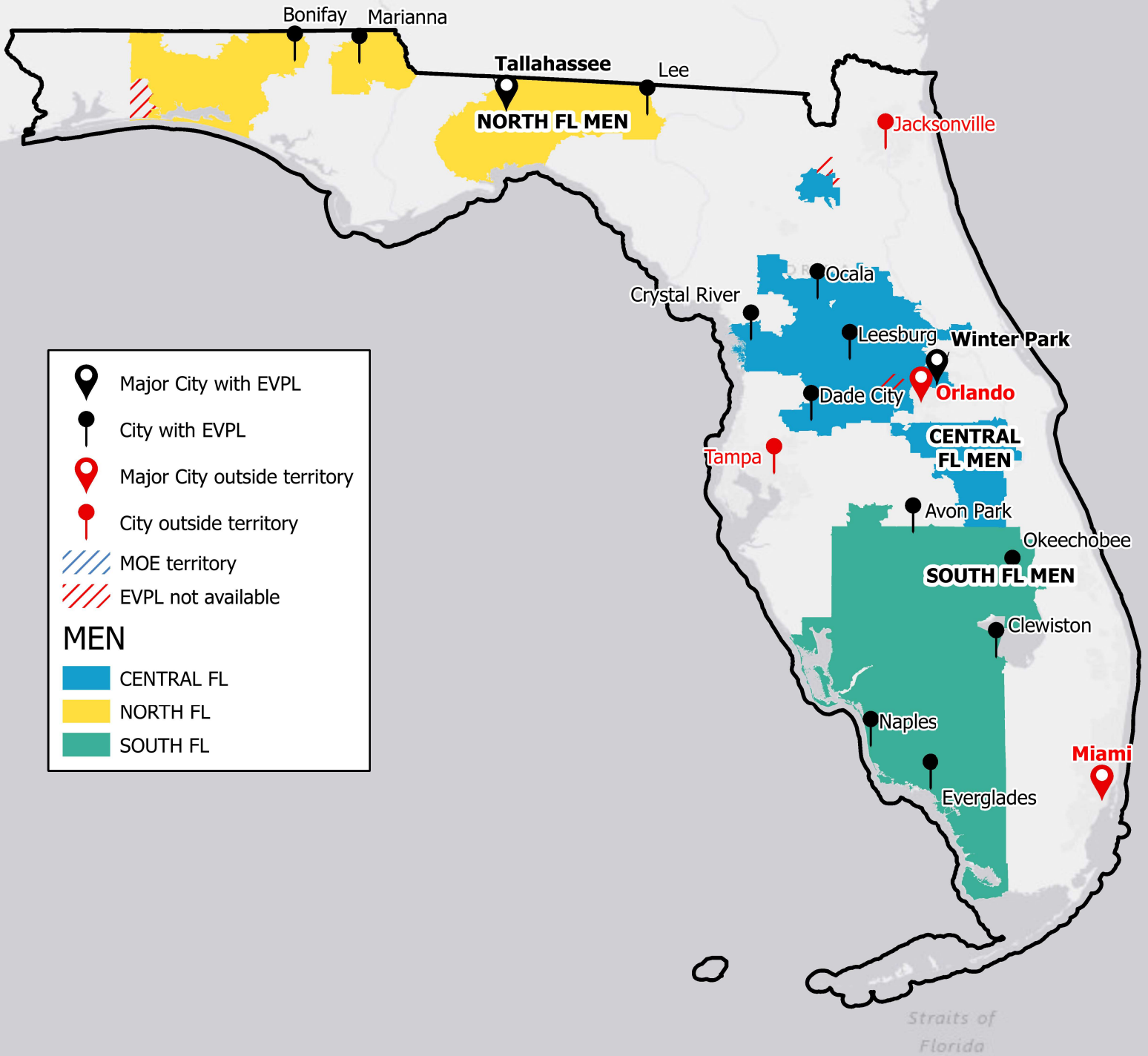
	Major City with EVPL		MOE territory
	City with EVPL		EVPL not available
	Major City Supported by Legacy Qwest	MEN	
	City Supported by Legacy Qwest		EAGLE
			LA JUNTA

Where to Interconnect in Florida

Central MEN, North MEN & South MEN

Summary:

- Florida has 3 EVPL MENs spanning 6 LATAs and 133 wire-centers equipped for Ethernet
- LATAs in these MENs are 448, 450, 454, 458, 939 and 953



- Major City with EVPL
- City with EVPL
- Major City outside territory
- City outside territory
- MOE territory
- EVPL not available

MEN

- CENTRAL FL
- NORTH FL
- SOUTH FL

Where to Interconnect in Georgia

Hinesville MEN

Summary:

- Georgia has 1 EVPL MEN spanning 1 LATA and 4 wire-centers equipped for Ethernet
- LATA in this MEN is 440



LUMEN®

INTERNAL USE ONLY

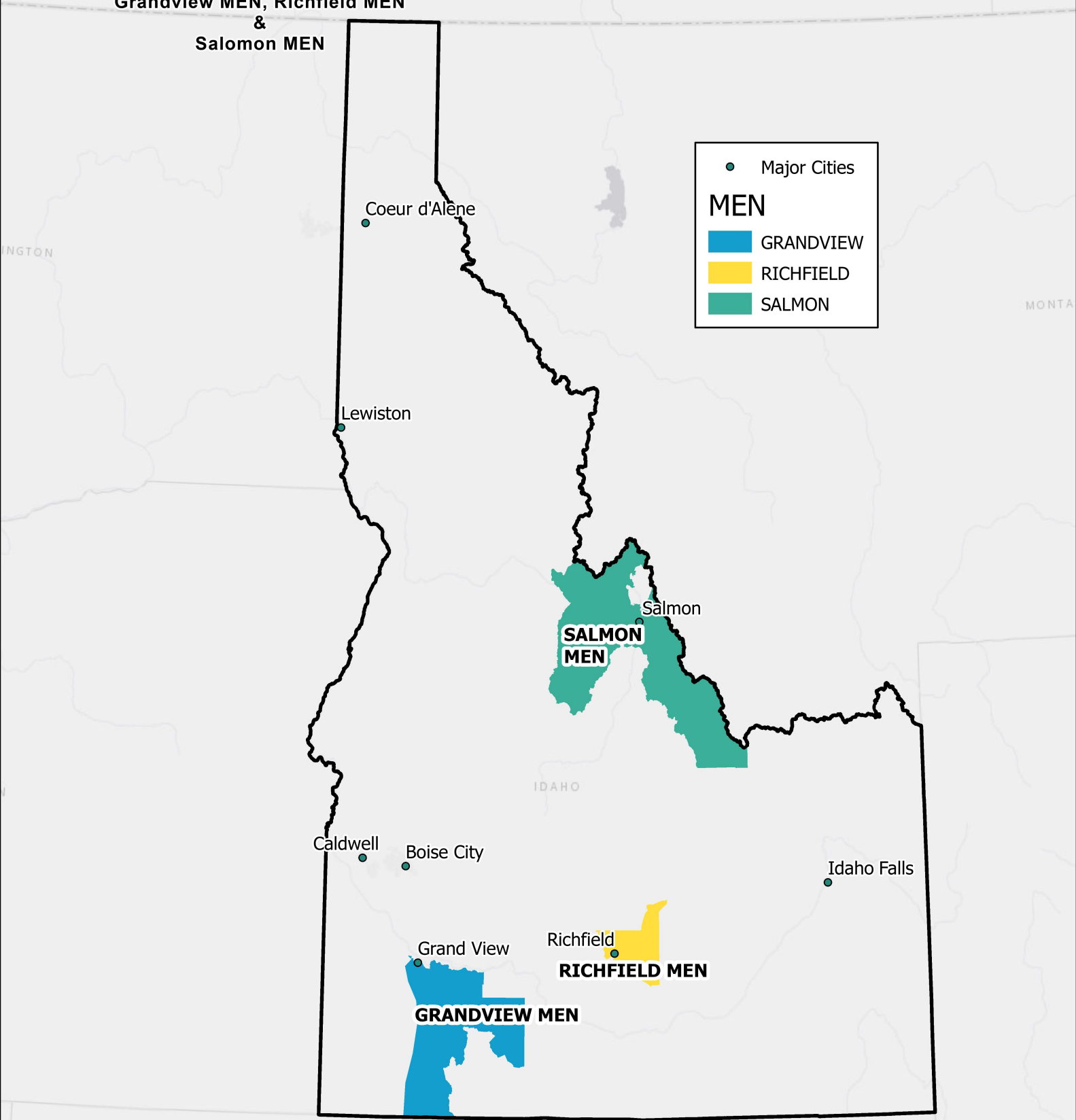
THIS MAP DATA IS FOR INTERNAL LUMEN USE ONLY AND IS NOT TO BE DISSEMINATED OUTSIDE OF LUMEN WITHOUT AUTHORIZATION FROM RISK MANAGEMENT. DISSEMINATION OF THIS DATA OUTSIDE OF LUMEN WITHOUT AUTHORIZATION WILL BE CONSIDERED A VIOLATION OF COMPANY POLICY.

Where to Interconnect in Idaho

Summary:

- Idaho has 3 EVPL MENs spanning 1 LATA and 6 wire-centers equipped for Ethernet
- LATA in this MEN is 652

Grandview MEN, Richfield MEN
&
Salmon MEN



● Major Cities

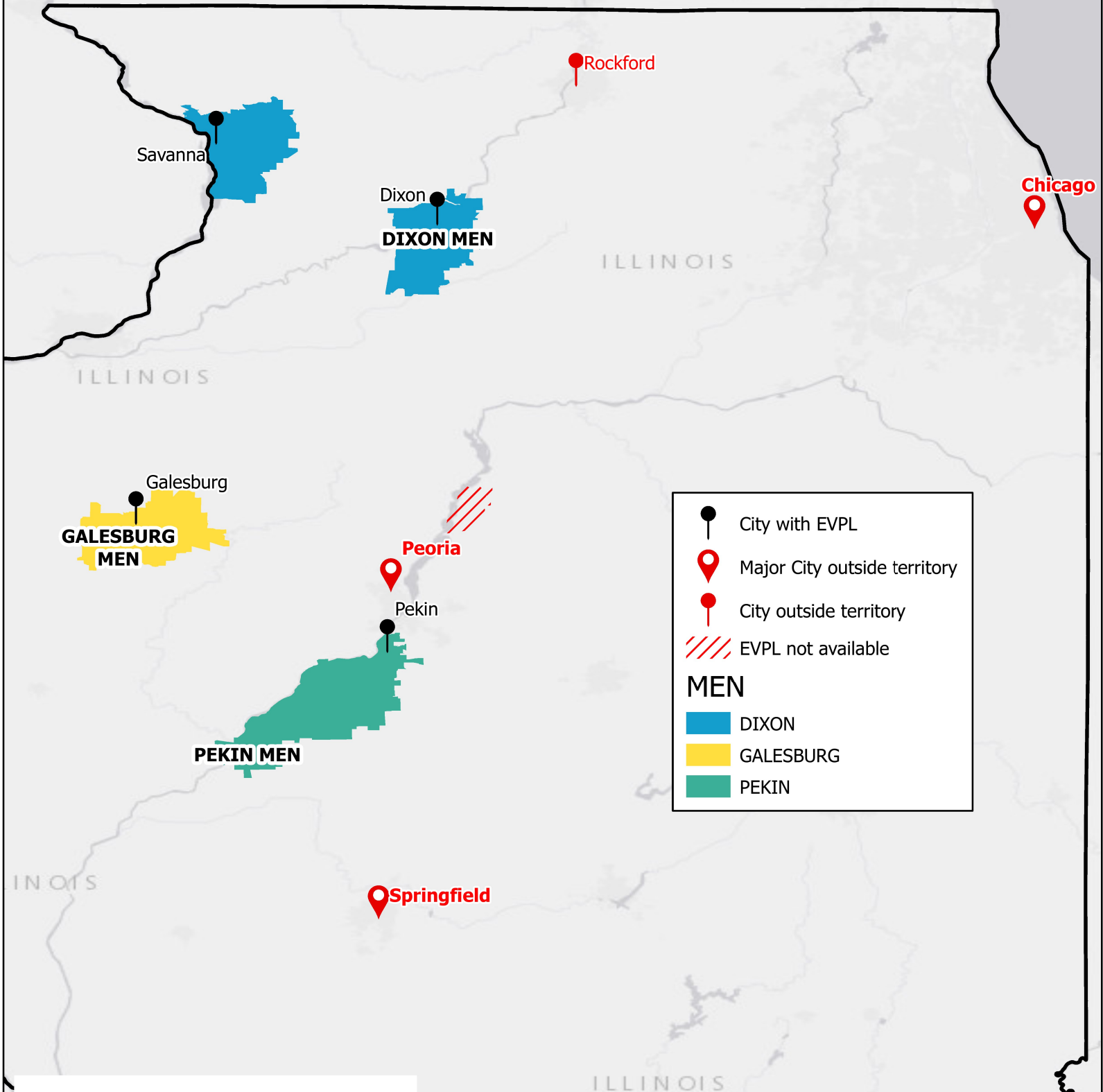
MEN

- GRANDVIEW
- RICHFIELD
- SALMON

Where to Interconnect in Illinois

Dixon MEN, Galesburg MEN
&
Pekin MEN

Summary:
-Illinois has 3 EVPL MENs spanning 3 LATAs and 20 wire-centers equipped for Ethernet
-LATAs in these MENs are 364, 368 and 997



- City with EVPL
- 📍 Major City outside territory
- City outside territory
- ▨▨▨▨ EVPL not available

MEN

- DIXON
- GALESBURG
- PEKIN



INTERNAL USE ONLY

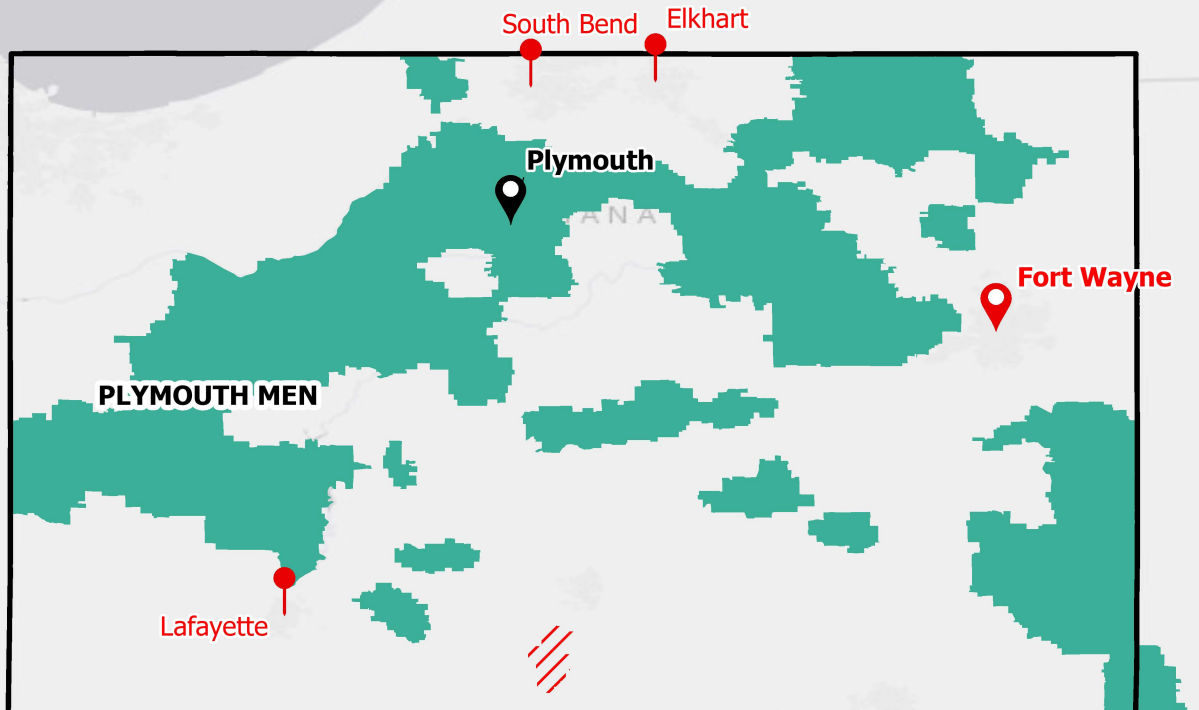
THIS MAP DATA IS FOR INTERNAL LUMEN USE ONLY AND IS NOT TO BE DISSEMINATED OUTSIDE OF LUMEN WITHOUT AUTHORIZATION FROM RISK MANAGEMENT. DISSEMINATION OF THIS DATA OUTSIDE OF LUMEN WITHOUT AUTHORIZATION WILL BE CONSIDERED A VIOLATION OF COMPANY POLICY.

Where to Interconnect in Indiana

Franklin MEN, Jamestown MEN, Lawrenceburg MEN & Plymouth MEN

Summary:

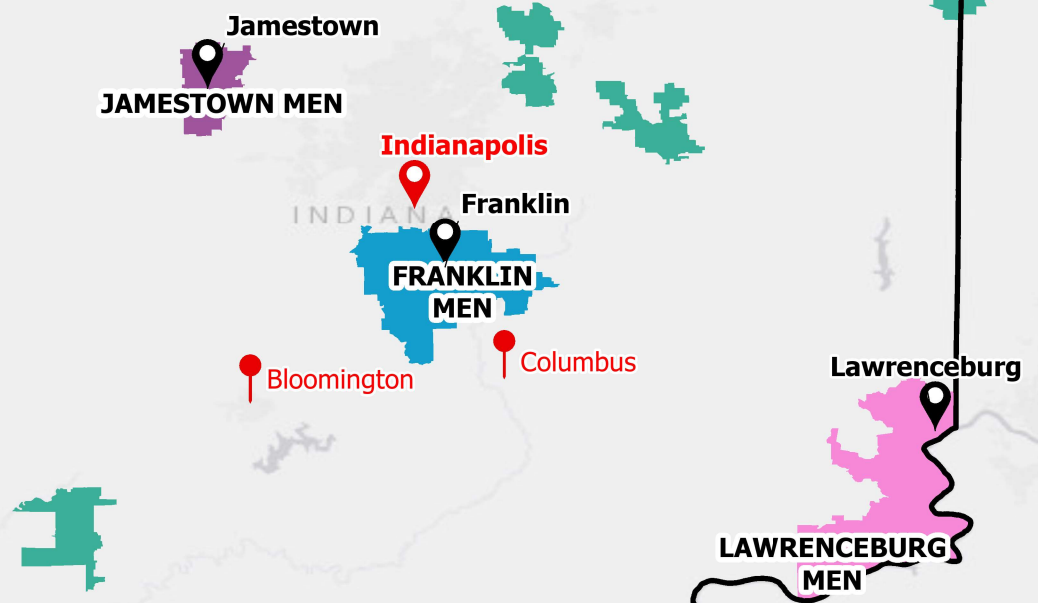
- Indiana has 4 EVPL MENs spanning 5 LATAs and 94 wire-centers equipped for Ethernet
- LATAs in these MENs are 332, 334, 336, 922 and 937



Major City with EVPL
 Major City outside territory
 City outside territory
 EVPL not available

MEN

- FRANKLIN
- JAMESTOWN
- LAWRENCEBURG
- PLYMOUTH



INTERNAL USE ONLY

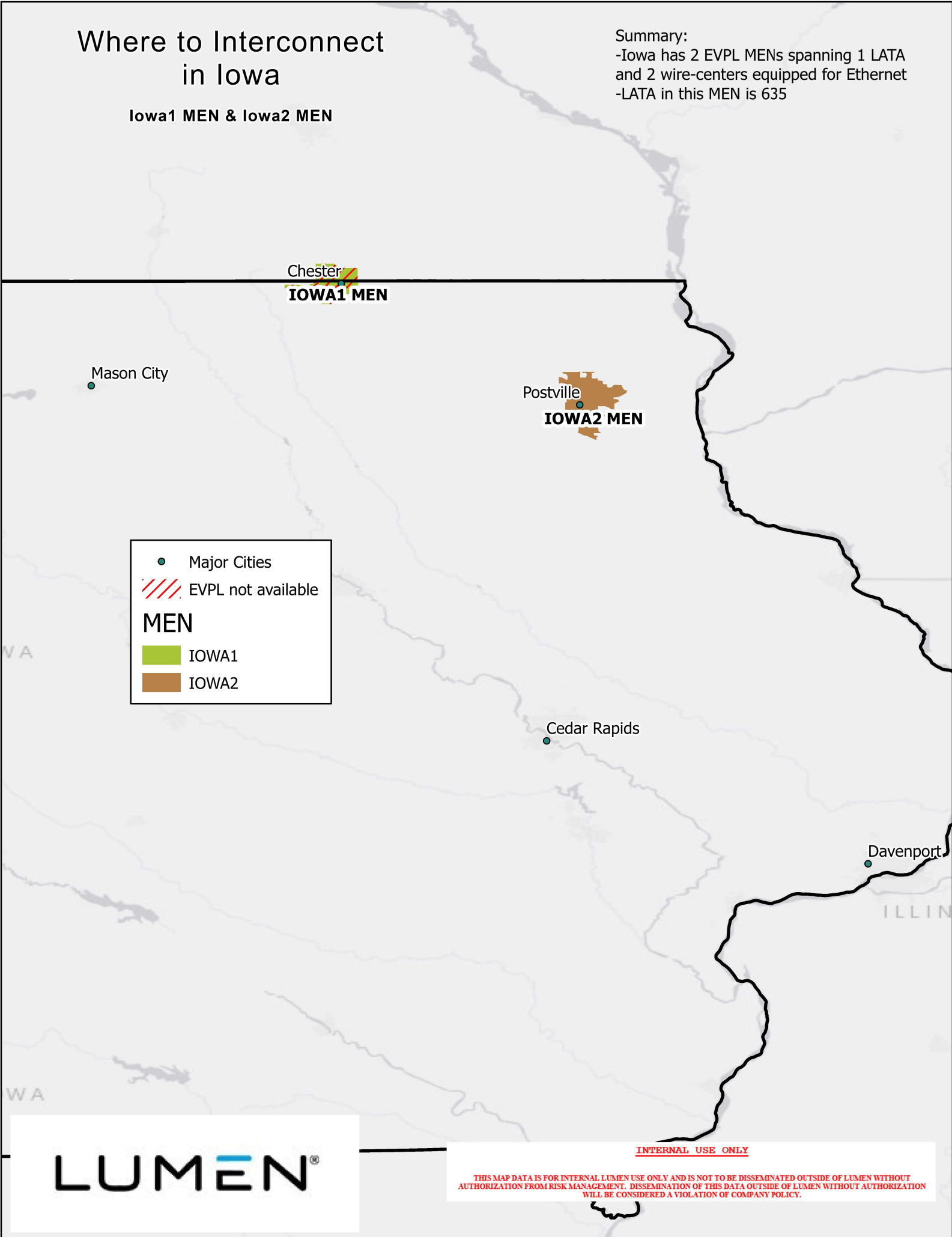
THIS MAP DATA IS FOR INTERNAL LUMEN USE ONLY AND IS NOT TO BE DISSEMINATED OUTSIDE OF LUMEN WITHOUT AUTHORIZATION FROM RISK MANAGEMENT. DISSEMINATION OF THIS DATA OUTSIDE OF LUMEN WITHOUT AUTHORIZATION WILL BE CONSIDERED A VIOLATION OF COMPANY POLICY.

Where to Interconnect in Iowa

Iowa1 MEN & Iowa2 MEN

Summary:

- Iowa has 2 EVPL MENs spanning 1 LATA and 2 wire-centers equipped for Ethernet
- LATA in this MEN is 635



INTERNAL USE ONLY

LUMEN[®]

THIS MAP DATA IS FOR INTERNAL LUMEN USE ONLY AND IS NOT TO BE DISSEMINATED OUTSIDE OF LUMEN WITHOUT AUTHORIZATION FROM RISK MANAGEMENT. DISSEMINATION OF THIS DATA OUTSIDE OF LUMEN WITHOUT AUTHORIZATION WILL BE CONSIDERED A VIOLATION OF COMPANY POLICY.

Where to Interconnect in Kansas

Gardner MEM

Summary:

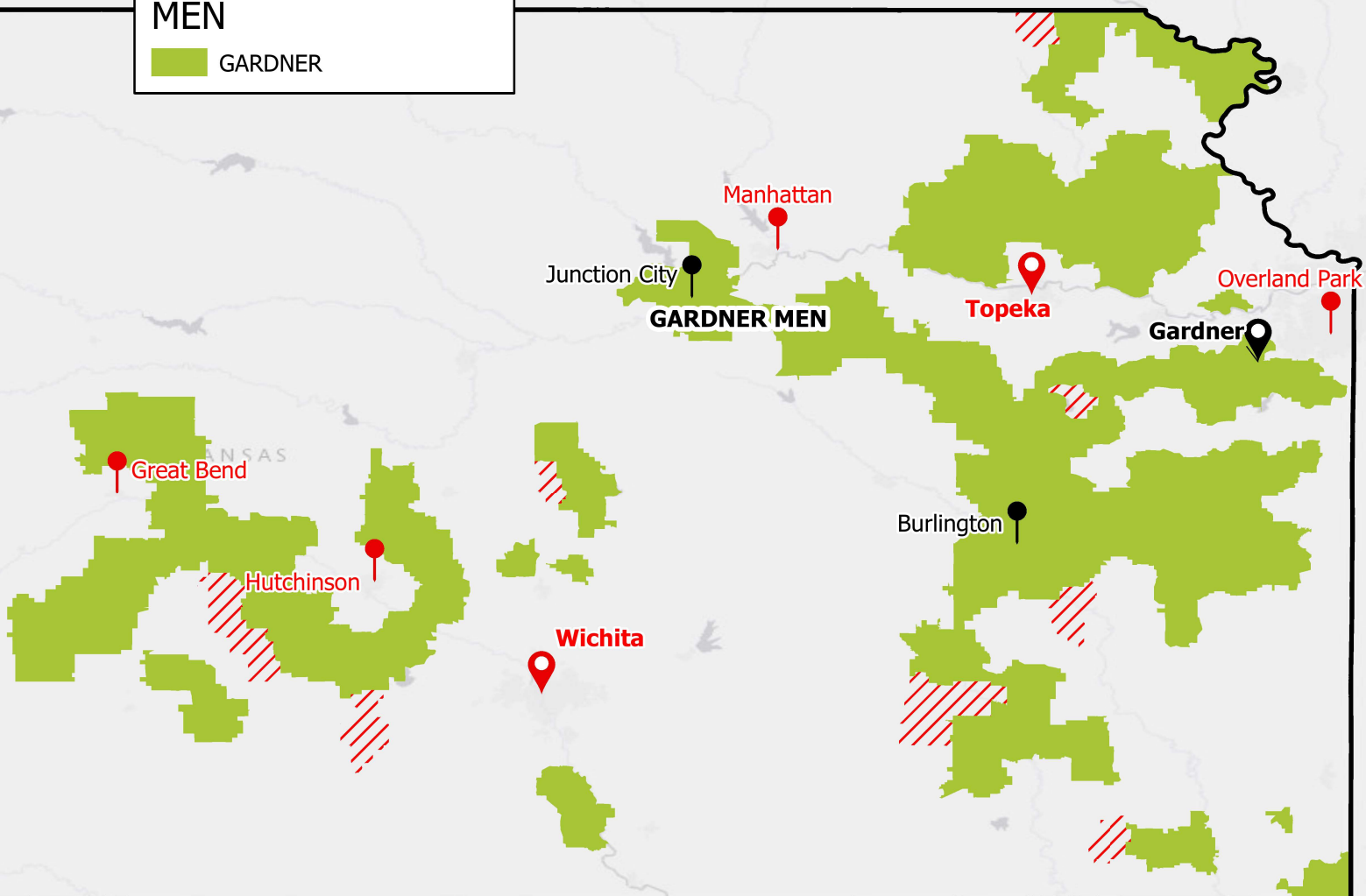
- Kansas has 1 EVPL MEN spanning 3 LATAs and 108 wire-centers equipped for Ethernet
- LATAs in these MENs are 524, 532 and 534

Legend:

- Major City with EVPL
- City with EVPL
- Major City outside territory
- City outside territory
- EVPL not available

MEN

- GARDNER

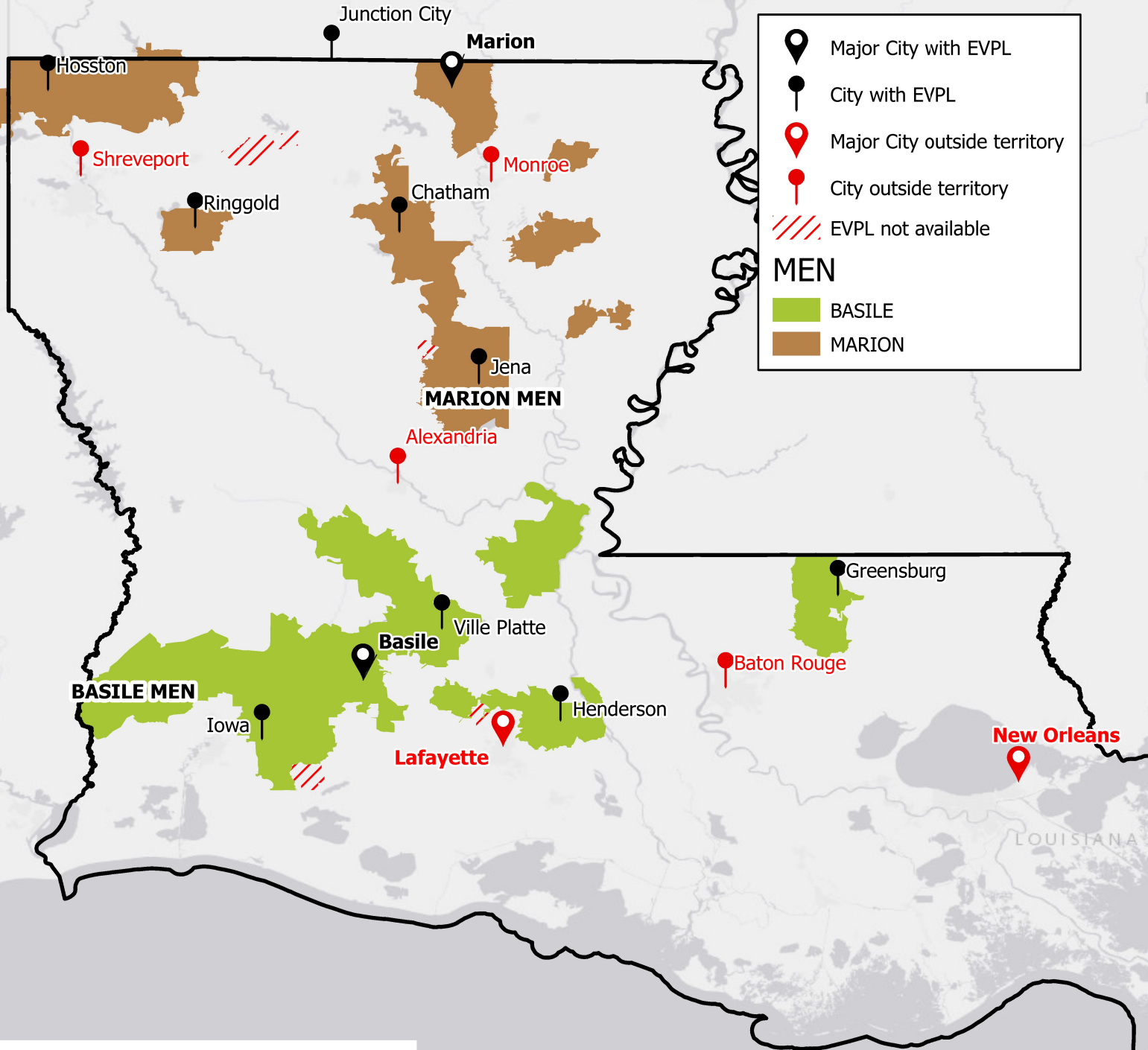


Where to Interconnect in Louisiana

Basile MEN & Marion MEN

Summary:

- Louisiana has 2 EVPL MENs spanning 3 LATAs and 61 wire-centers equipped for Ethernet
- The Marion MEN extends into Arkansas (see AR map)
- LATAs in these MENs are 486, 488 and 492

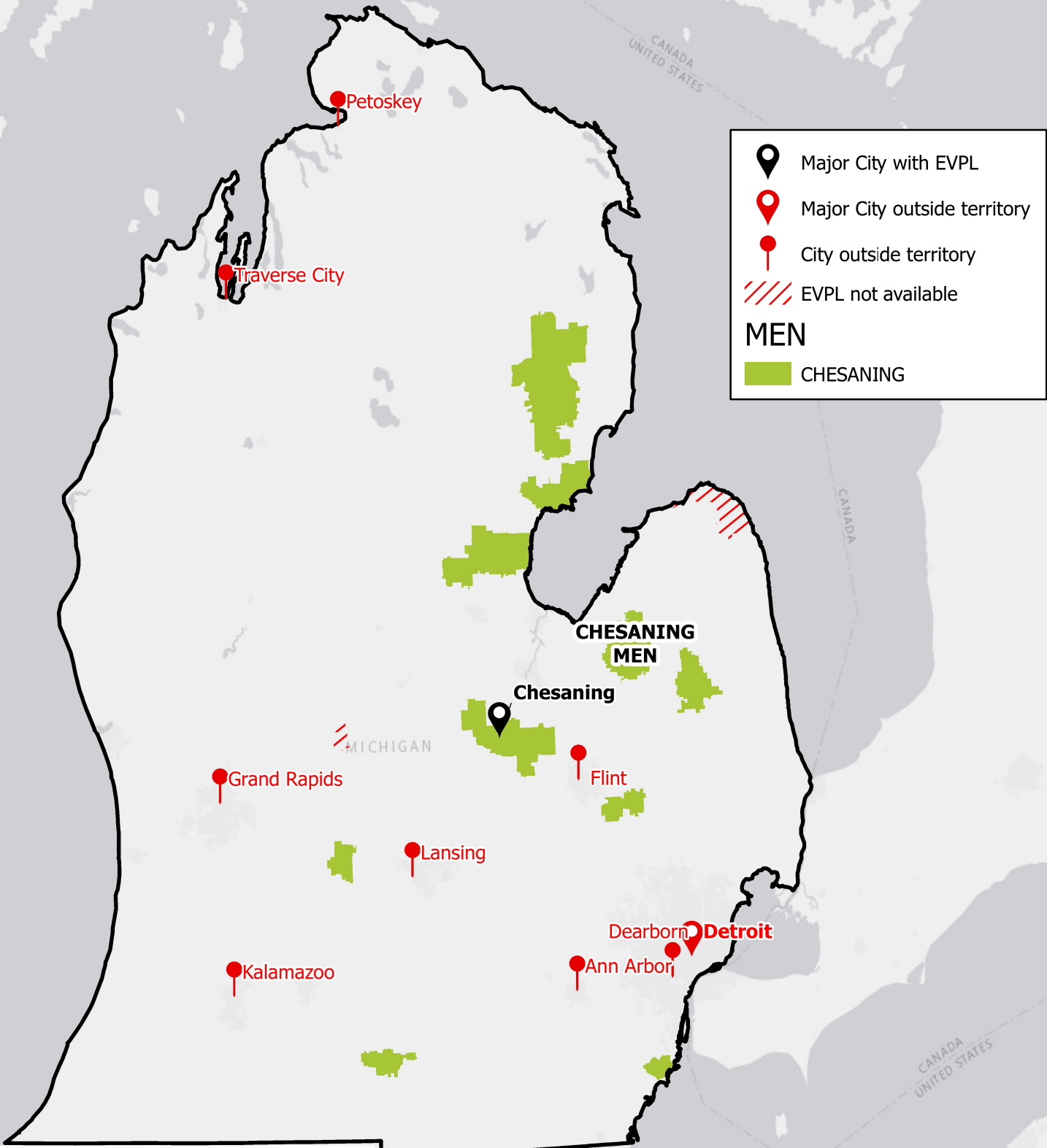


Where to Interconnect in Michigan

Chesaning MEM

Summary:

- Michigan has 1 EVPL MEN spanning 5 LATAs and 48 wire-centers equipped for Ethernet
- LATAs in these MENs are 340, 342, 344, 346 and 348



LUMEN[®]

INTERNAL USE ONLY

THIS MAP DATA IS FOR INTERNAL LUMEN USE ONLY AND IS NOT TO BE DISSEMINATED OUTSIDE OF LUMEN WITHOUT AUTHORIZATION FROM RISK MANAGEMENT. DISSEMINATION OF THIS DATA OUTSIDE OF LUMEN WITHOUT AUTHORIZATION WILL BE CONSIDERED A VIOLATION OF COMPANY POLICY.

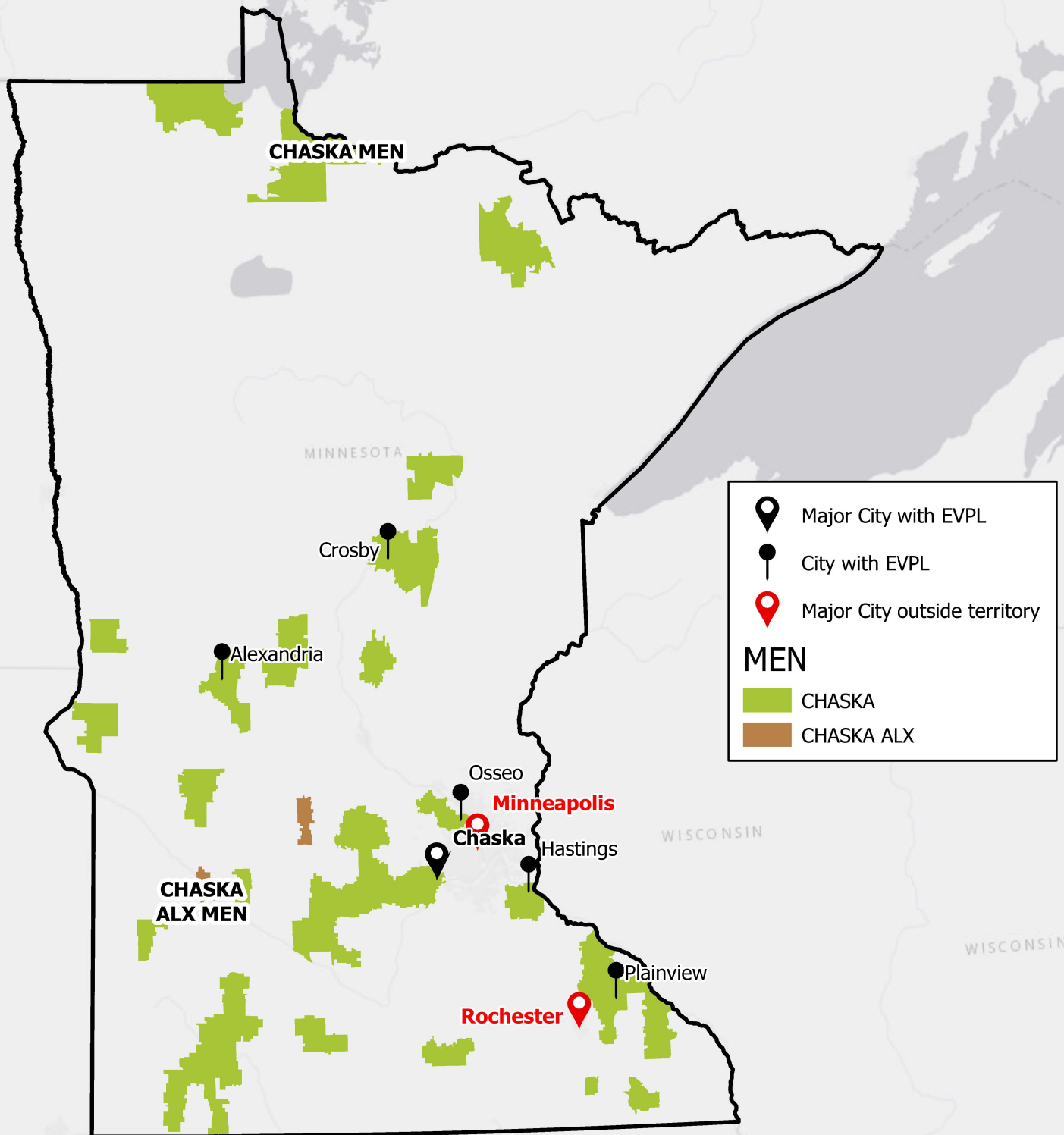
OHIO

Where to Interconnect in Minnesota

Chaska MEM & Chaska ALX MEM

Summary:

- Minnesota has 2 EVPL MENs spanning 5 LATAs and 73 wire-centers equipped for Ethernet
- LATAs in these MENs are 620, 626, 628, 636 and 651



Legend:

- Major City with EVPL (black pin)
- City with EVPL (black dot)
- Major City outside territory (red pin)

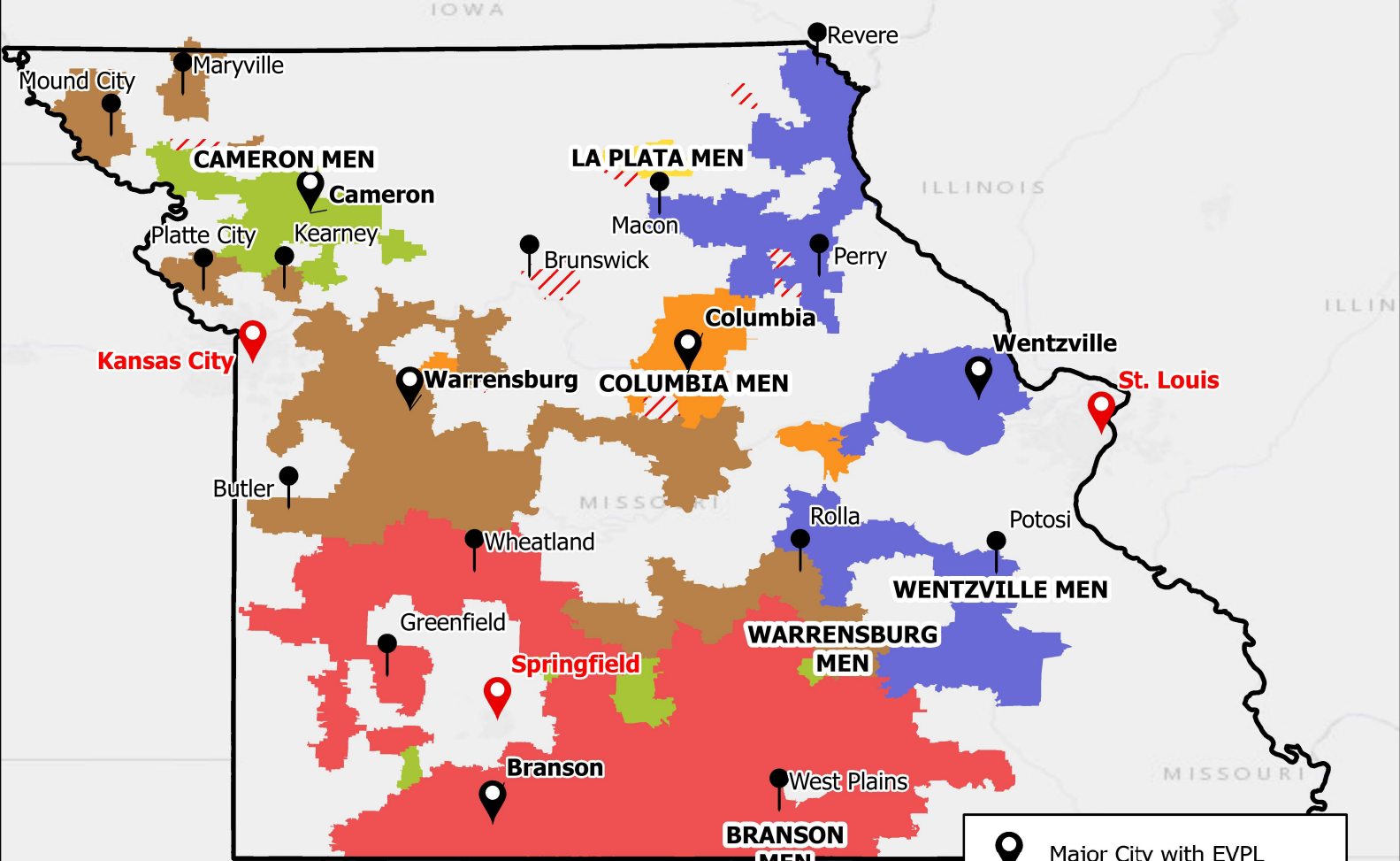
MEN

- CHASKA (green)
- CHASKA ALX (brown)

Where to Interconnect in Missouri

Branson MEN, Cameron MEN, Columbia MEN, La Plata MEN, Warrensburg MEN & Wentzville MEN

Summary:
 -Missouri has 6 EVPL MENs spanning 4 LATAs and 276 wire-centers equipped for Ethernet
 -LATAs in these MENs are 520, 521, 522 and 524



- Major City with EVPL
- City with EVPL
- Major City outside territory
- EVPL not available

MEN

- BRANSON
- CAMERON
- COLUMBIA
- LA PLATA
- WARRENSBURG
- WENTZVILLE



INTERNAL USE ONLY

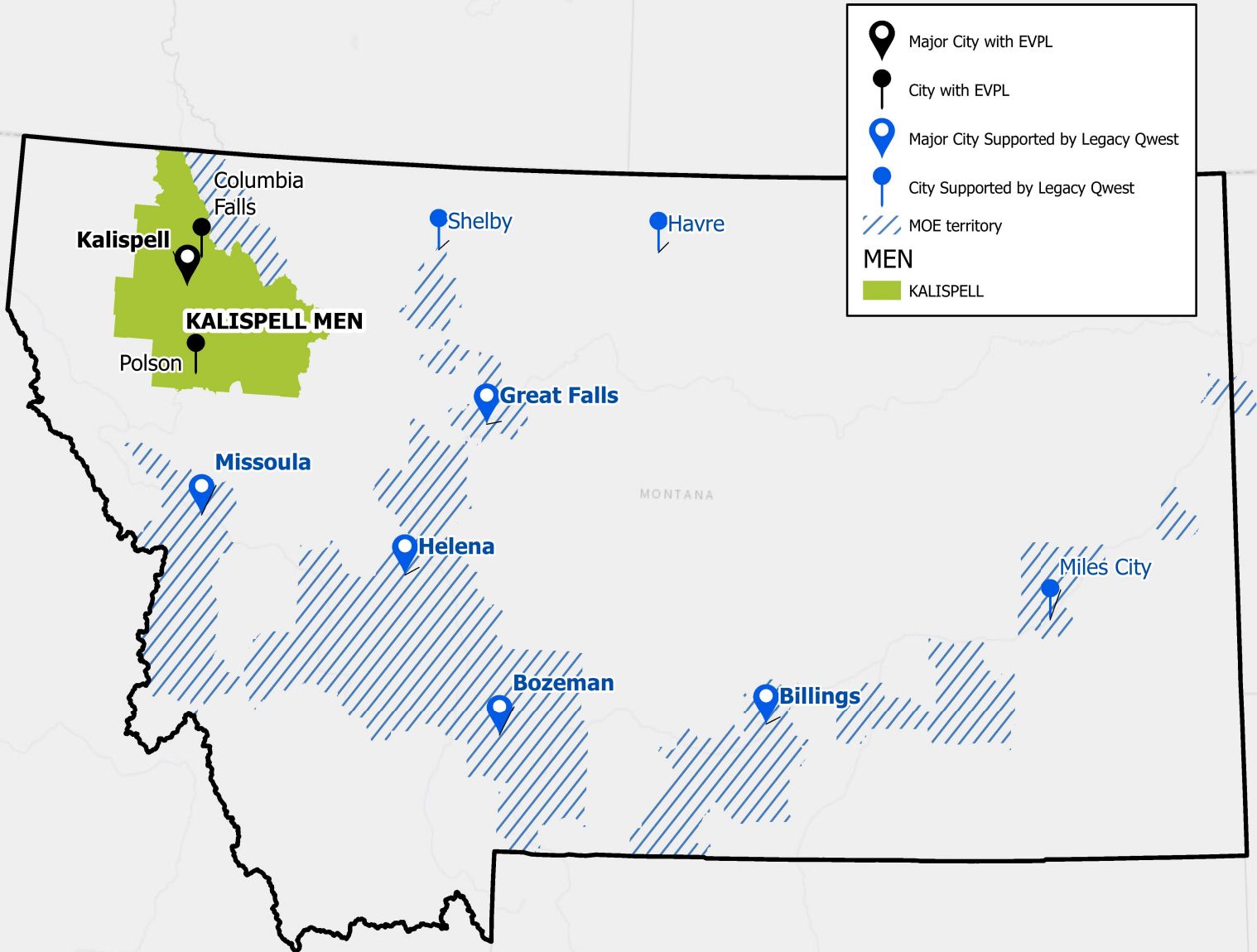
THIS MAP DATA IS FOR INTERNAL LUMEN USE ONLY AND IS NOT TO BE DISSEMINATED OUTSIDE OF LUMEN WITHOUT AUTHORIZATION FROM RISK MANAGEMENT. DISSEMINATION OF THIS DATA OUTSIDE OF LUMEN WITHOUT AUTHORIZATION WILL BE CONSIDERED A VIOLATION OF COMPANY POLICY.

Where to Interconnect in Montana

Kalispell MEN

Summary:

- Montana has 1 EVPL MEN spanning 1 LATA and 14 wire-centers equipped for Ethernet
- LATA in this MEN is 648

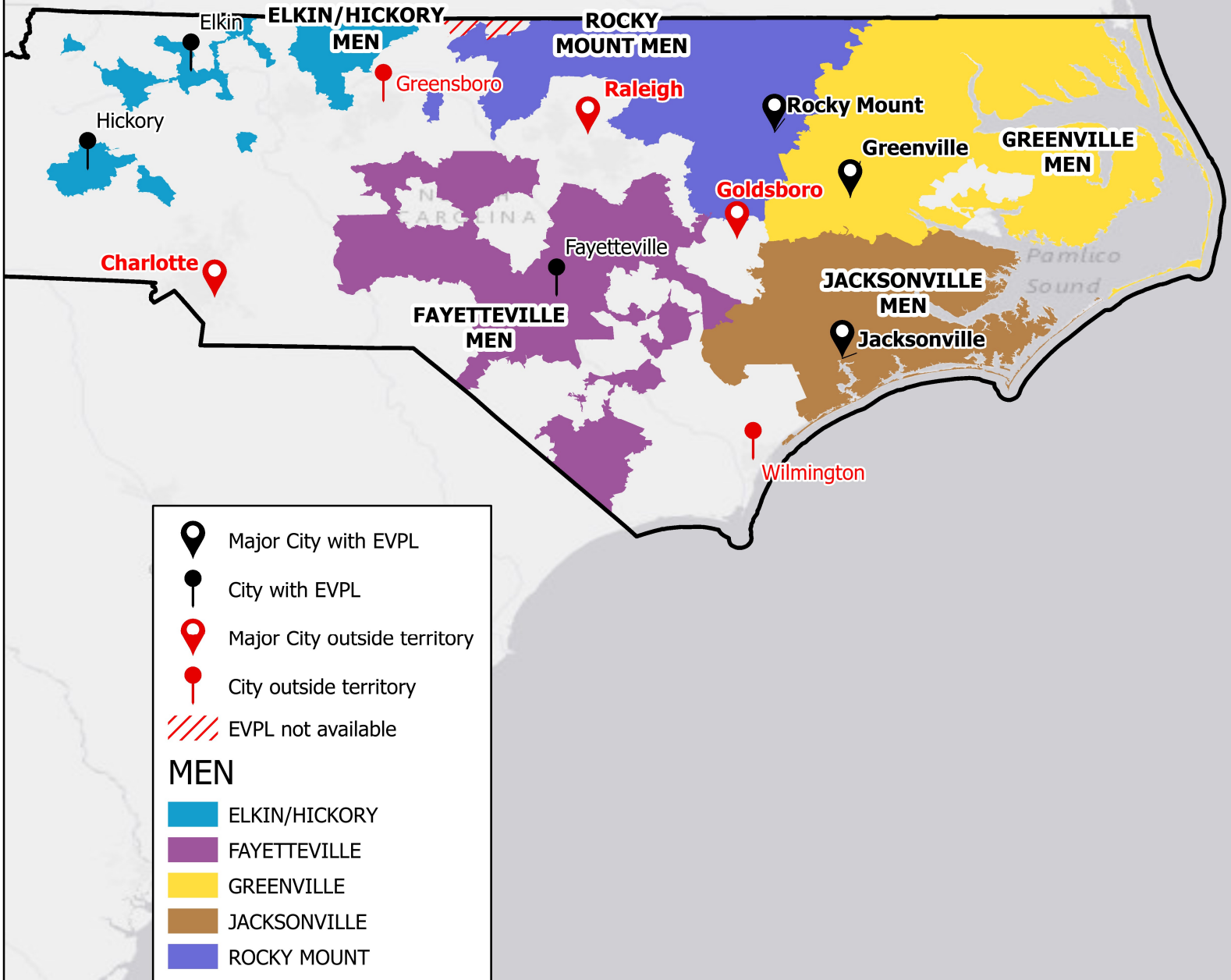


Where to Interconnect in North Carolina

Elkin/Hickory MEN, Fayetteville MEN, Greenville MEN, Jacksonville MEN, & Rocky Mount MEN

Summary:

- North Carolina has 5 EVPL MEN spanning 5 LATAs and 205 wire-centers equipped for Ethernet
- The Elkin/Hickory MEN is excluded from the Rocky Mount men because of extreme latency concerns although they are technically interconnected
- LATAs in these MENs are 422, 424, 426, 949 and 951

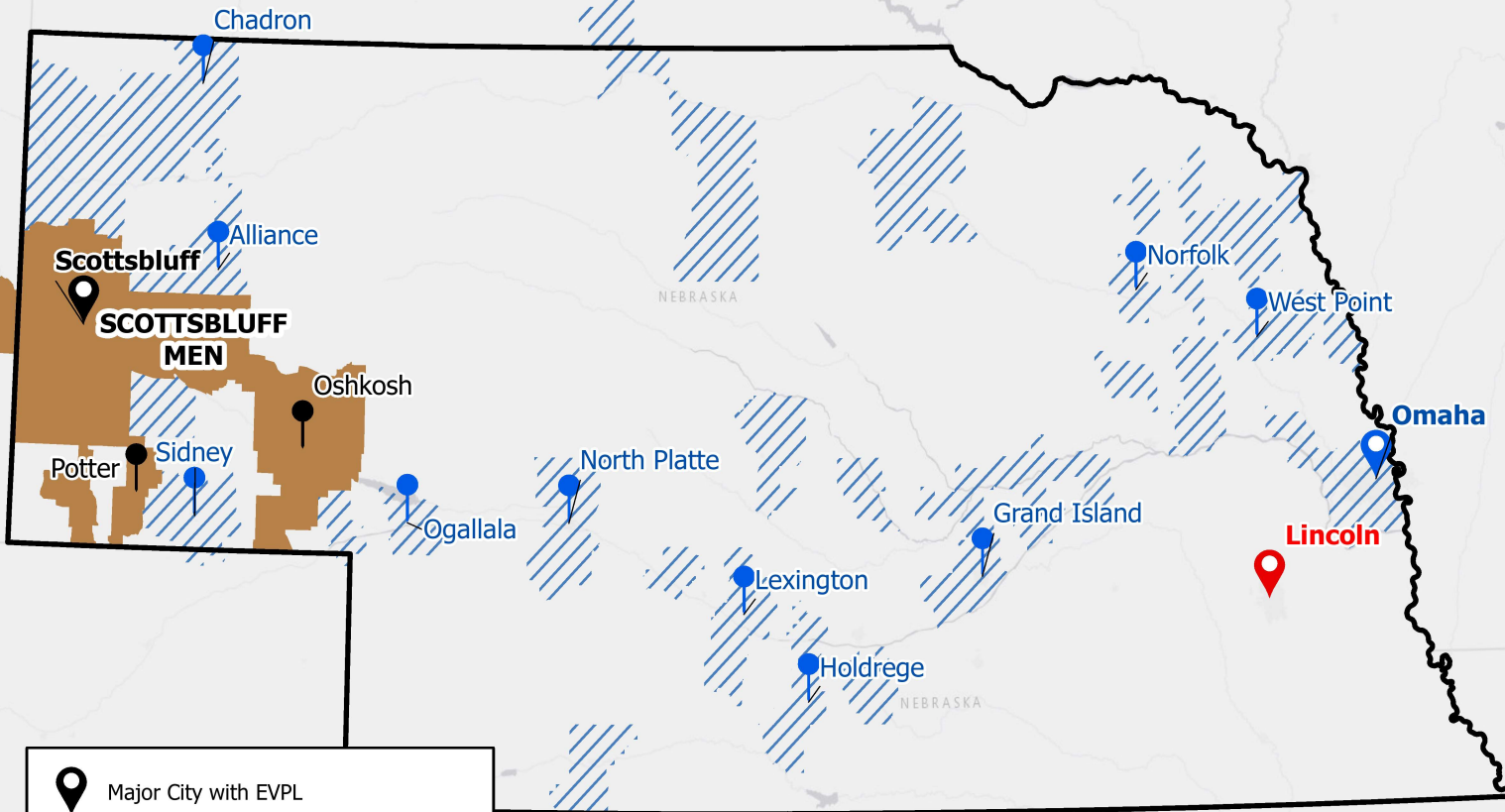


Where to Interconnect in Nebraska

Scottsbluff MEN

Summary:

- Nebraska has 1 EVPL MEN spanning 1 LATA and 12 wire-centers equipped for Ethernet
- LATA in this MEN is 646



- Major City with EVPL
- City with EVPL
- Major City outside territory
- Major City Supported by Legacy Qwest
- City Supported by Legacy Qwest
- MOE territory

MEN

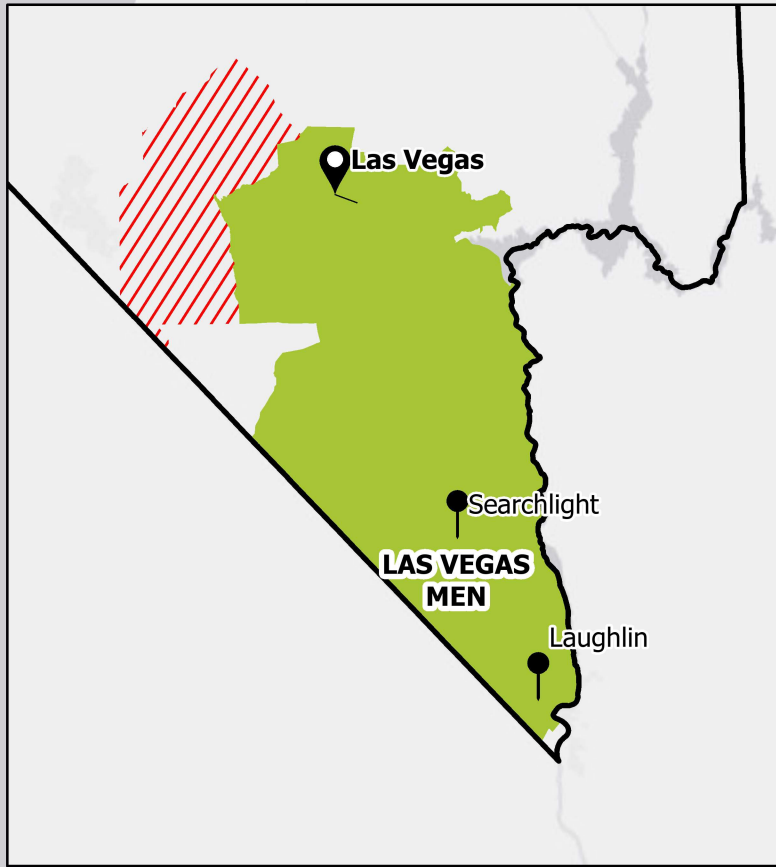
- SCOTTSBLUFF

Where to Interconnect in Nevada

Las Vegas MEN

Summary:

- Nevada has 1 EVPL MEN spanning 1 LATA and 21 wire-centers equipped for Ethernet
- LATA in this MEN is 721



- Major City with EVPL
- City with EVPL
- EVPL not available
- MEN**
- LAS VEGAS



Where to Interconnect in New Jersey

Clinton MEN

Summary:

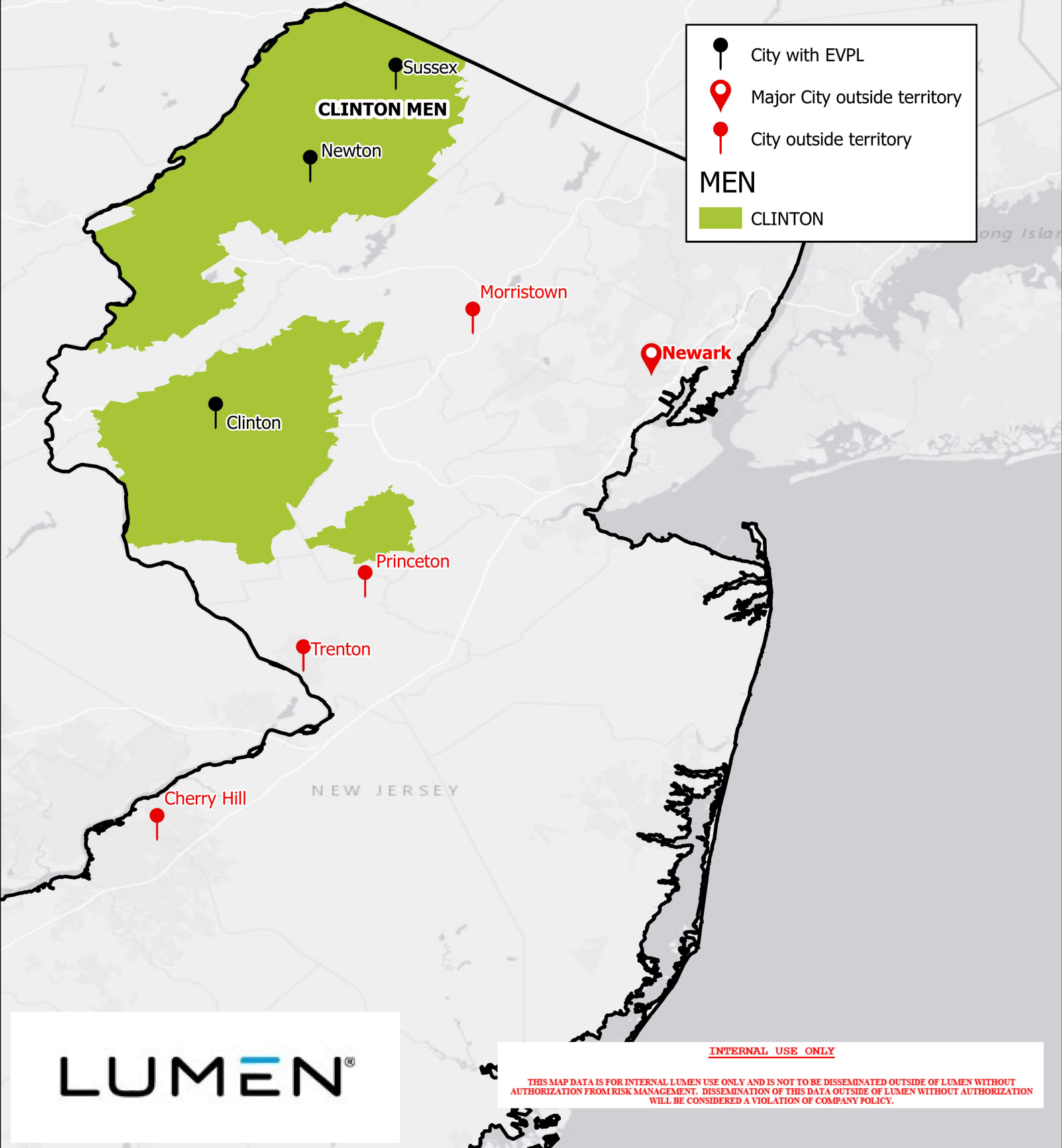
- New Jersey has 1 EVPL MEN spanning 1 LATA and 26 wire-centers equipped for Ethernet
- LATA in this MEN is 224

Legend:

- City with EVPL
- 📍 Major City outside territory
- City outside territory

MEN

- CLINTON



LUMEN®

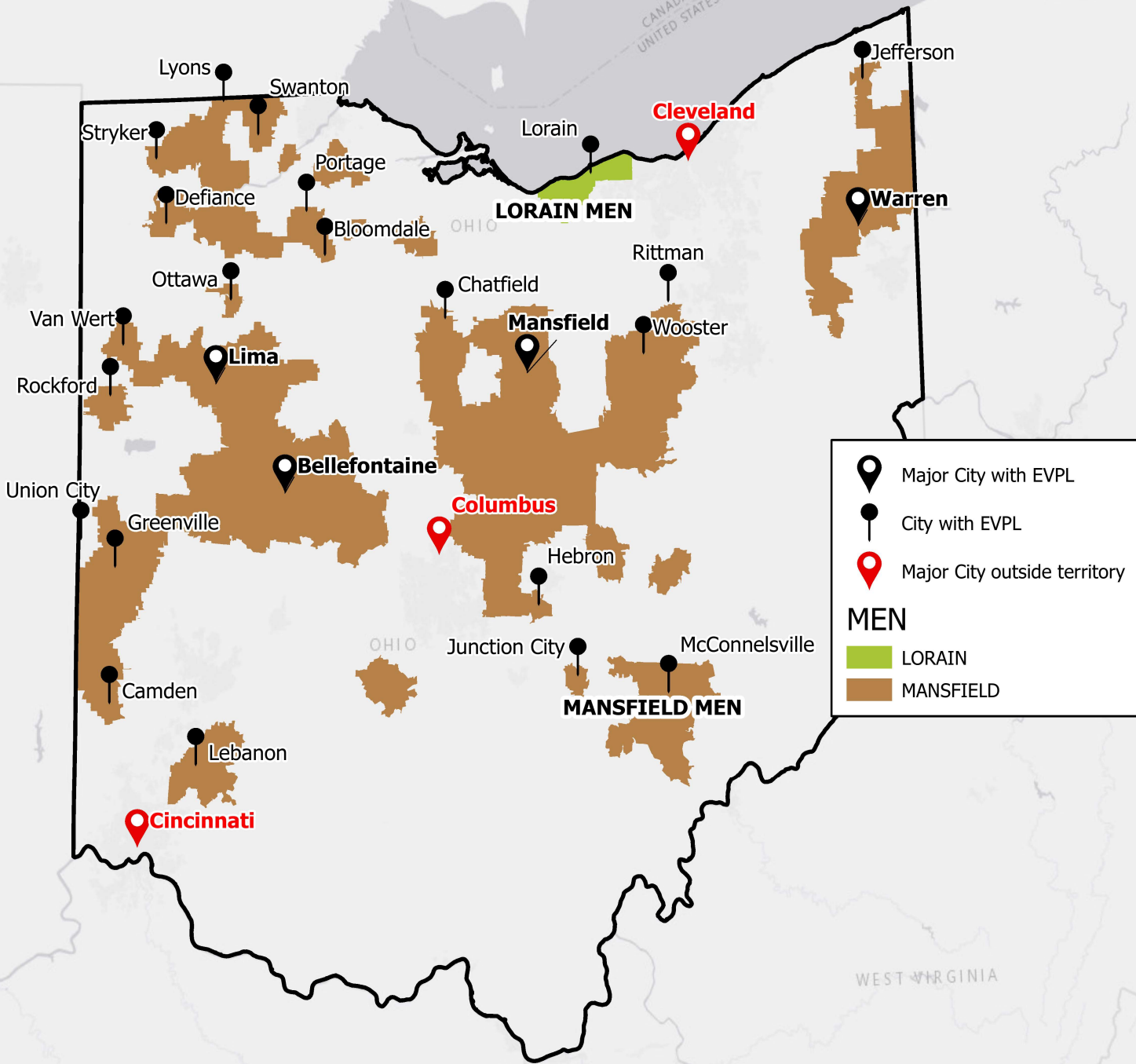
INTERNAL USE ONLY

THIS MAP DATA IS FOR INTERNAL LUMEN USE ONLY AND IS NOT TO BE DISSEMINATED OUTSIDE OF LUMEN WITHOUT AUTHORIZATION FROM RISK MANAGEMENT. DISSEMINATION OF THIS DATA OUTSIDE OF LUMEN WITHOUT AUTHORIZATION WILL BE CONSIDERED A VIOLATION OF COMPANY POLICY.

Where to Interconnect in Ohio

Lorain MEN & Mansfield MEN

Summary:
 -Ohio has 2 EVPL MENs spanning 7 LATAs and 187 wire-centers equipped for Ethernet
 -LATAs in these MENs are 320, 322, 324, 326, 328, 922 and 923



Major City with EVPL
 City with EVPL
 Major City outside territory
MEN
 LORAIN
 MANSFIELD

Where to Interconnect in Oklahoma

Russellville MEN

Summary:

-Oklahoma has 1 EVPL MEN spanning 1 LATA and 1 wire-center equipped for Ethernet

-LATA in this MEN is 526

● Major Cities

MEN

■ RUSSELLVILLE

Tulsa

Broken Arrow

Colcord

**RUSSELLVILLE
MEN**

LUMEN®

INTERNAL USE ONLY

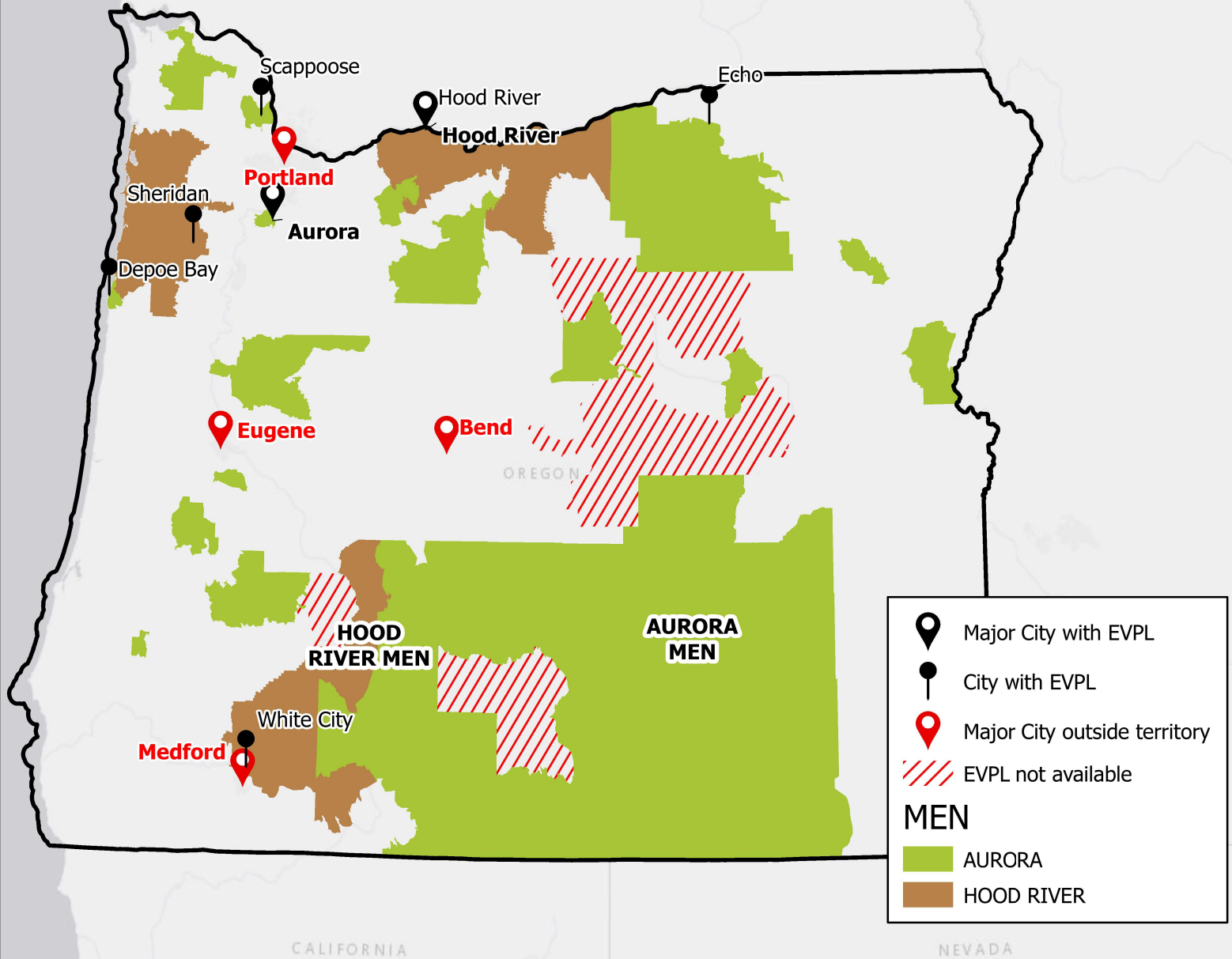
THIS MAP DATA IS FOR INTERNAL LUMEN USE ONLY AND IS NOT TO BE DISSEMINATED OUTSIDE OF LUMEN WITHOUT AUTHORIZATION FROM RISK MANAGEMENT. DISSEMINATION OF THIS DATA OUTSIDE OF LUMEN WITHOUT AUTHORIZATION WILL BE CONSIDERED A VIOLATION OF COMPANY POLICY.

Where to Interconnect in Oregon

Aurora MEN & Hood River MEN

Summary:

- Oregon has 2 EVPL MENs spanning 2 LATAs and 77 wire-centers equipped for Ethernet
- LATAs in these MENs are 670 and 672



Where to Interconnect in Pennsylvania

Carlisle MEN

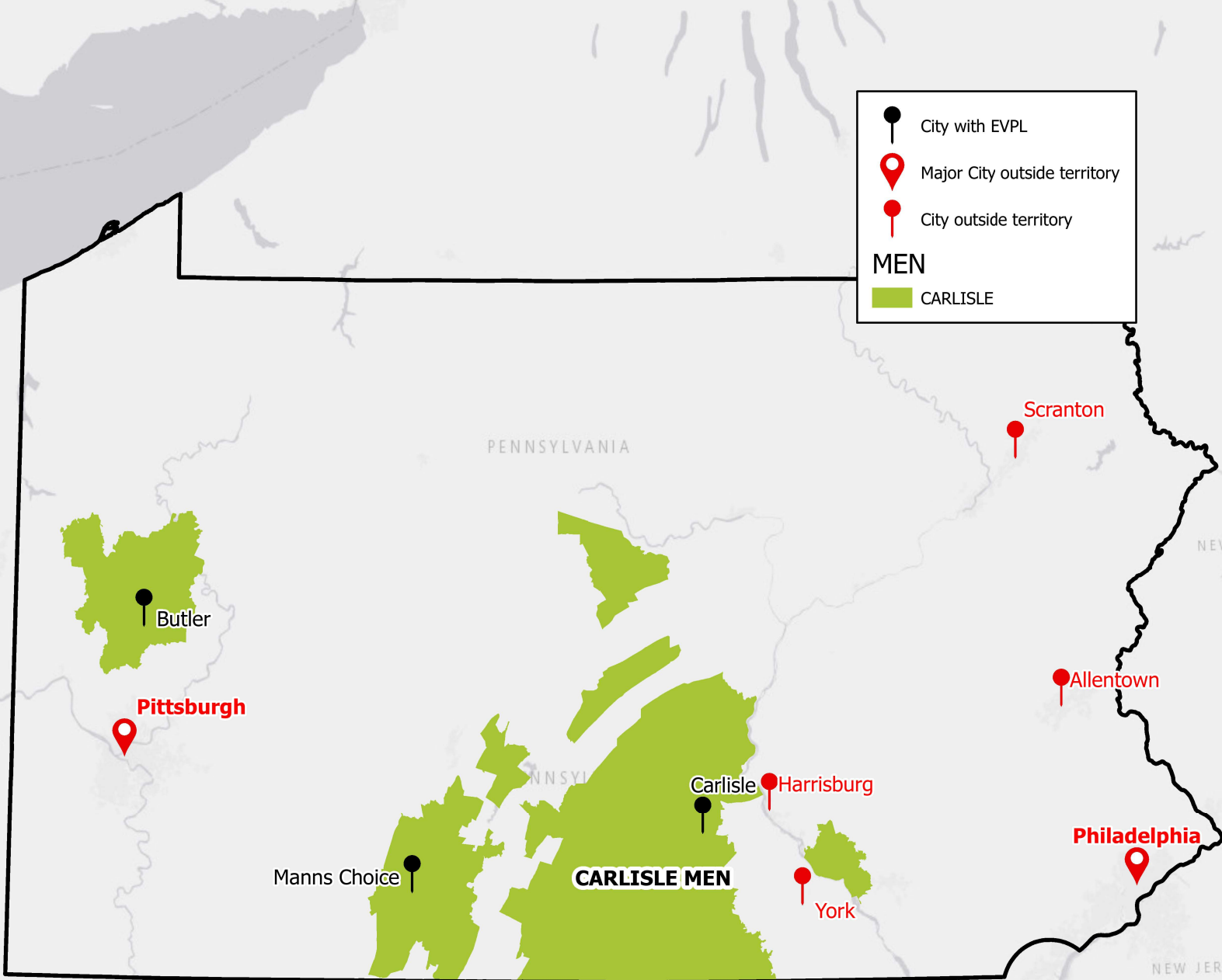
Summary:

-Pennsylvania has 1 EVPL MEN spanning 4 LATAs and 90 wire-centers equipped for Ethernet

-LATAs in this MEN are 226, 230, 232 and 234

● City with EVPL
📍 Major City outside territory
● City outside territory

MEN
■ CARLISLE

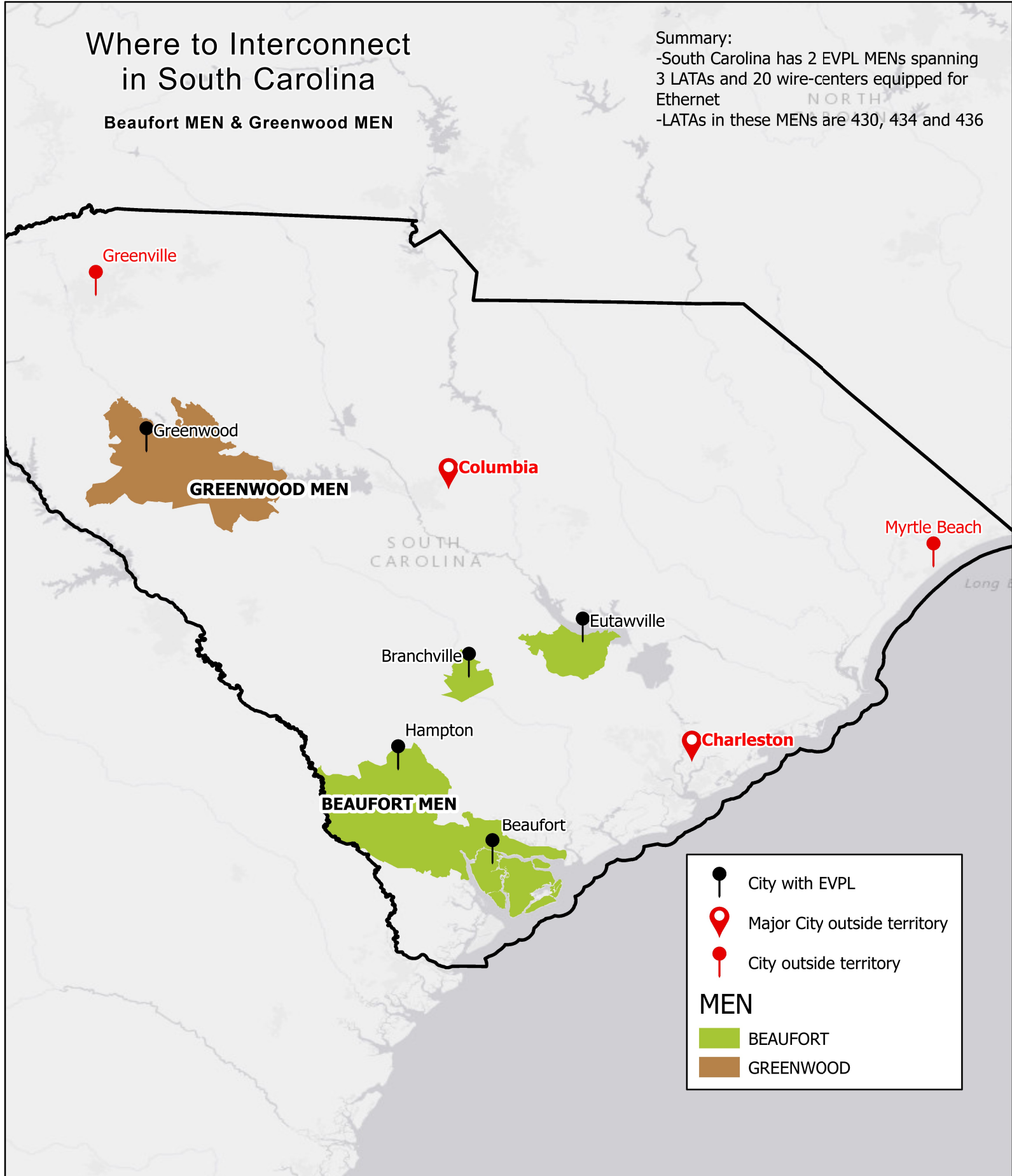


Where to Interconnect in South Carolina

Beaufort MEN & Greenwood MEN

Summary:

- South Carolina has 2 EVPL MENs spanning 3 LATAs and 20 wire-centers equipped for Ethernet
- LATAs in these MENs are 430, 434 and 436



- City with EVPL
- Major City outside territory
- City outside territory

MEN

- BEAUFORT
- GREENWOOD

Where to Interconnect in Tennessee

Adamsville MEN, Johnson City MEN
&
Ooltewah MEN

Summary:

- Tennessee has 3 EVPL MENs spanning 4 LATAs and 32 wire-centers equipped for Ethernet
- The Johnson City MEN extends into Virginia (see VA map)
- LATAs in these MENs are 468, 472, 474 and 956



Legend:

- City with EVPL
- 📍 Major City outside territory
- City outside territory

MEN

- ADAMSVILLE
- JOHNSON CITY
- OOLTEWAH



INTERNAL USE ONLY

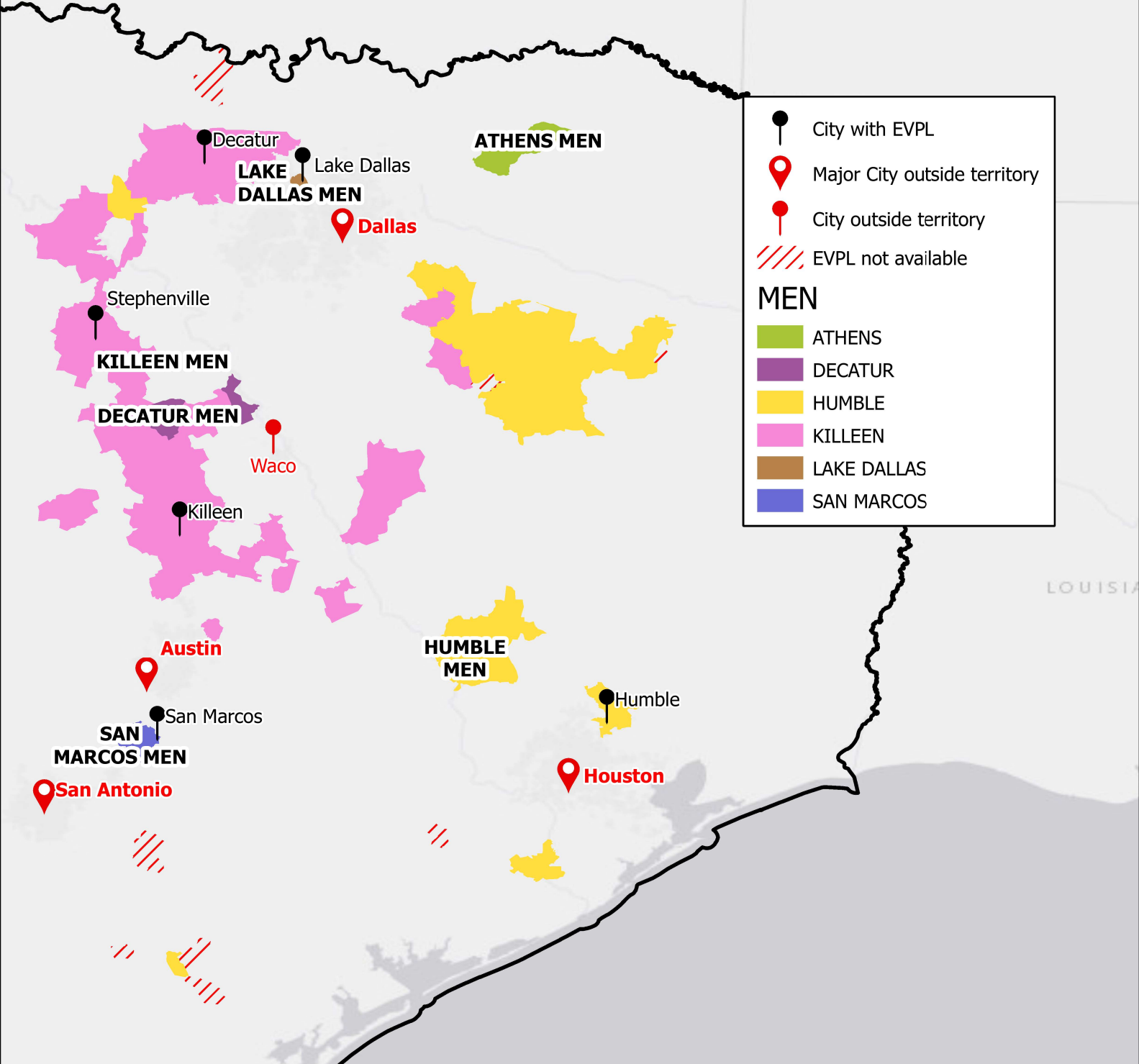
THIS MAP DATA IS FOR INTERNAL LUMEN USE ONLY AND IS NOT TO BE DISSEMINATED OUTSIDE OF LUMEN WITHOUT AUTHORIZATION FROM RISK MANAGEMENT. DISSEMINATION OF THIS DATA OUTSIDE OF LUMEN WITHOUT AUTHORIZATION WILL BE CONSIDERED A VIOLATION OF COMPANY POLICY.

Where to Interconnect in Texas

Athens MEN, Decatur MEN, Humble MEN, Killeen MEN, Lake Dallas MEN & San Marcos MEN

Summary:

-Texas has 6 EVPL MENs spanning 6 LATAs and 104 wire-centers equipped for Ethernet
 -LATAs in these MENs are 552, 554, 556, 558, 560 and 564



- City with EVPL
- Major City outside territory
- City outside territory
- EVPL not available

MEN

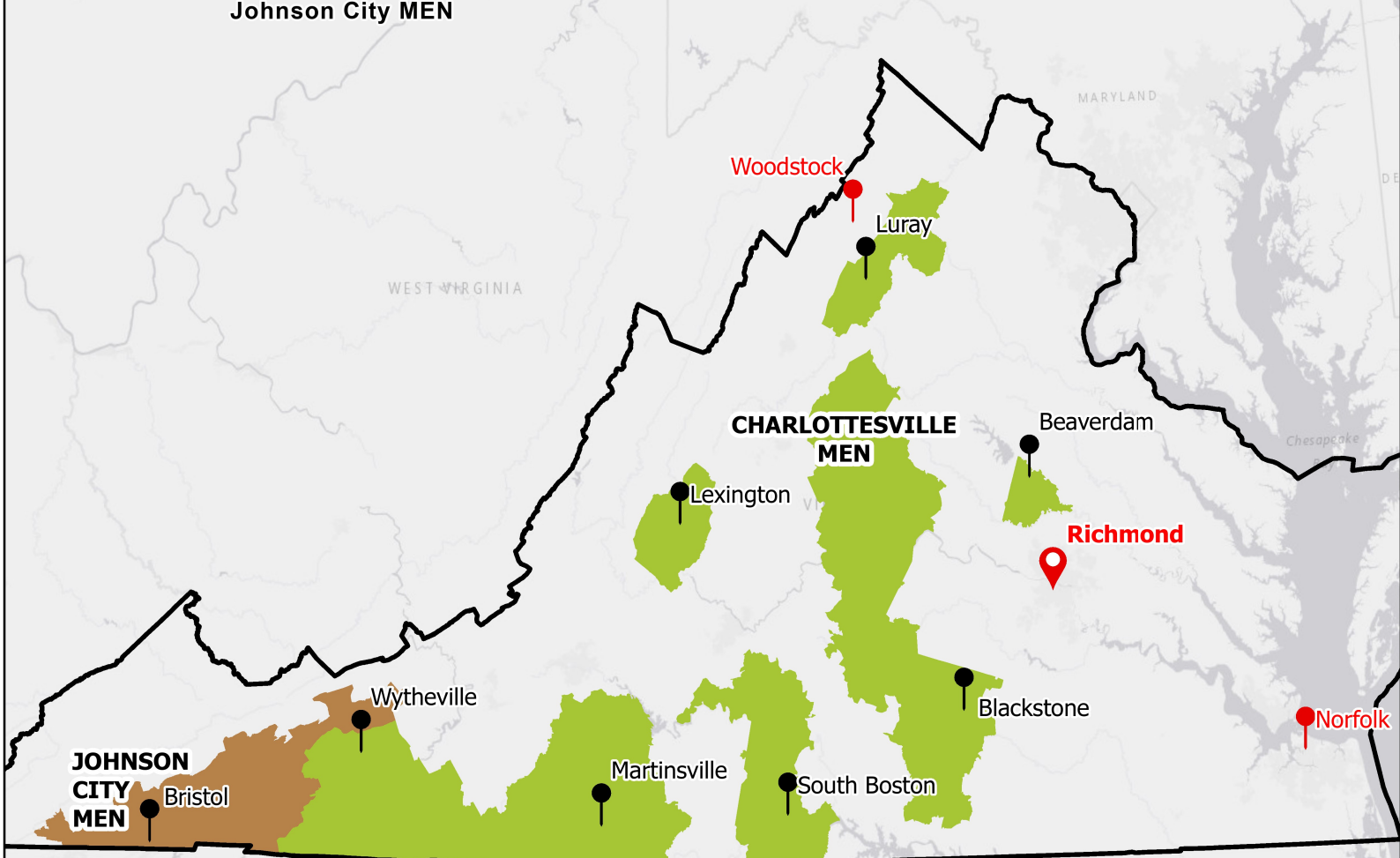
- ATHENS
- DECATUR
- HUMBLE
- KILLEEN
- LAKE DALLAS
- SAN MARCOS

Where to Interconnect in Virginia

Charlottesville MEN
&
Johnson City MEN

Summary:

- Virginia has 2 EVPL MENs spanning 6 LATAs and 90 wire-centers equipped for Ethernet
- LATAs in these MENs are 244, 246, 248, 250, 928 and 956



Legend:

- City with EVPL
- 📍 Major City outside territory
- City outside territory

MEN

- CHARLOTTESVILLE
- JOHNSON CITY



INTERNAL USE ONLY

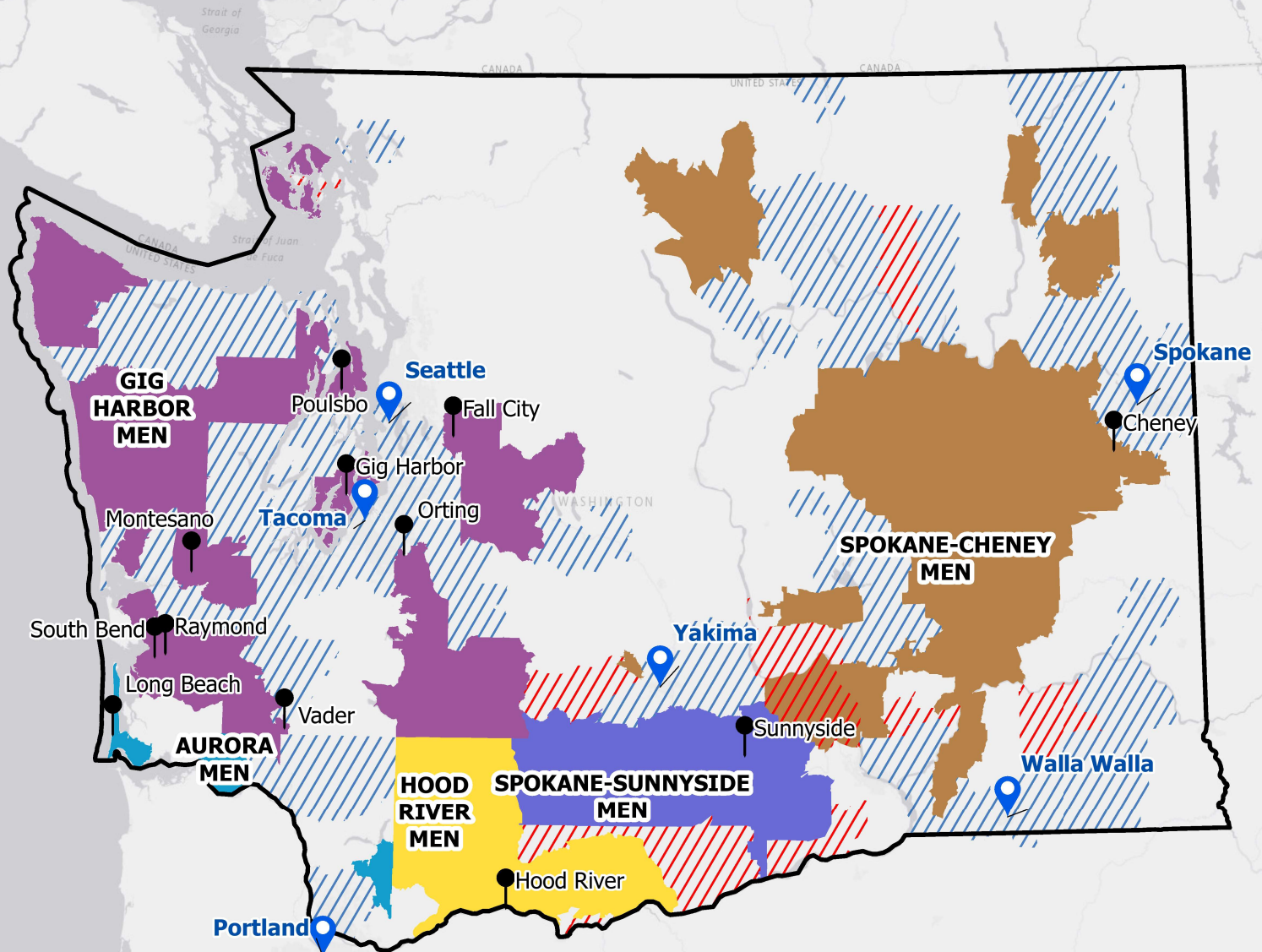
THIS MAP DATA IS FOR INTERNAL LUMEN USE ONLY AND IS NOT TO BE DISSEMINATED OUTSIDE OF LUMEN WITHOUT AUTHORIZATION FROM RISK MANAGEMENT. DISSEMINATION OF THIS DATA OUTSIDE OF LUMEN WITHOUT AUTHORIZATION WILL BE CONSIDERED A VIOLATION OF COMPANY POLICY.

Where to Interconnect in Washington

Aurora MEN, Gig Harbor MEN, Hood River MEN, Spokane-Cheney MEN & Spokane-Sunnyside MEN

Summary:

- Washington has 5 EVPL MENs spanning 3 LATAs and 98 wire-centers equipped for Ethernet
- LATAs in these MENs are 672, 674 and 676



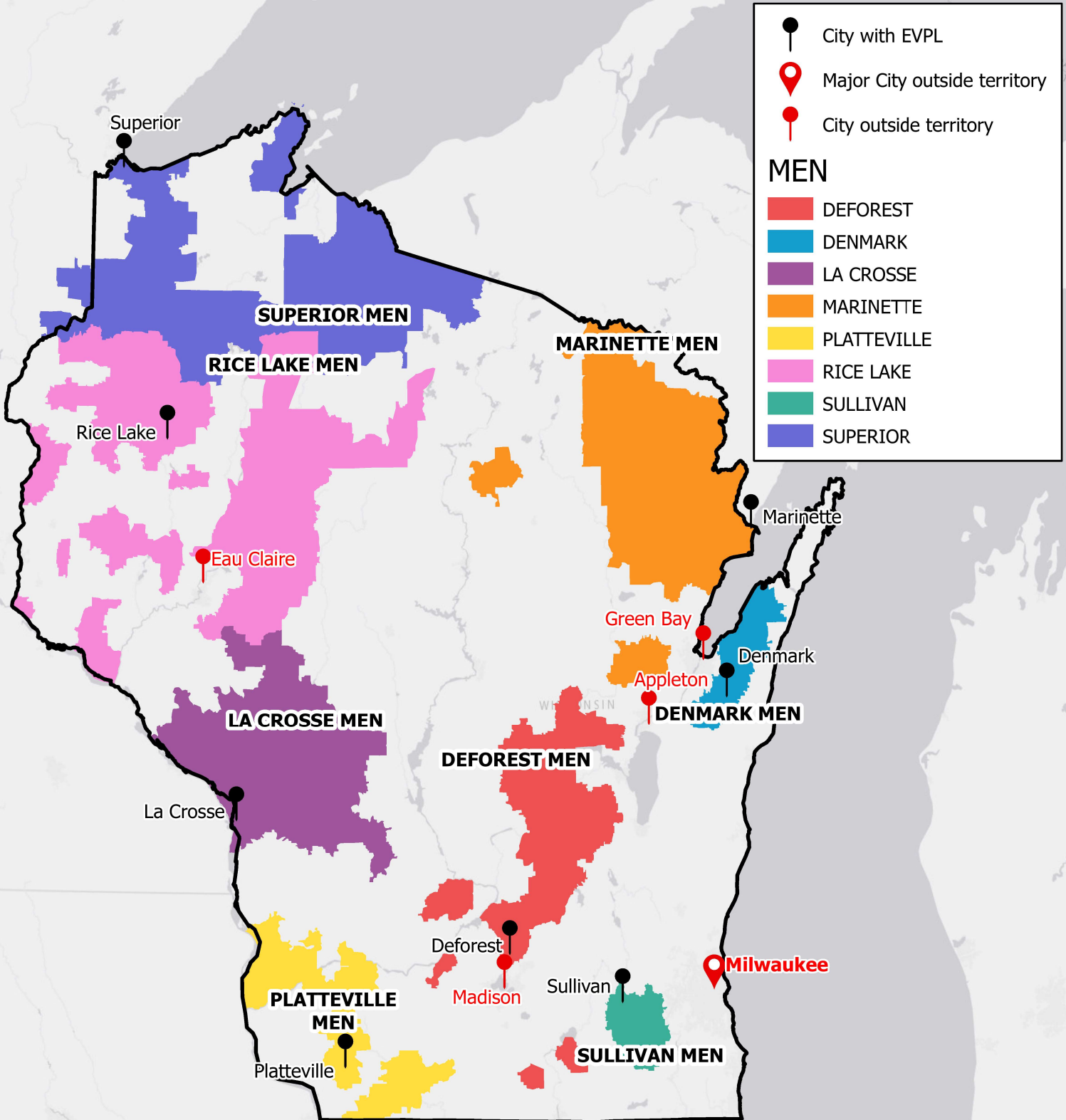
	City with EVPL	MEN
	Major City Supported by Legacy Qwest	AURORA
	MOE territory	GIG HARBOR
	EVPL not available	HOOD RIVER
		SPOKANE-CHENEY
		SPOKANE-SUNNYSIDE

Where to Interconnect in Wisconsin

Deforest MEN, Denmark MEN, La Crosse MEN, Marinette MEN, Platteville MEN, Rice Lake MEN, Sullivan MEN & Superior MEN

Summary:

- Wisconsin has 8 EVPL MENs spanning 4 LATAs and 202 wire-centers equipped for Ethernet
- LATAs in these MENs are 350, 352, 354 and 356



LUMEN®

INTERNAL USE ONLY

THIS MAP DATA IS FOR INTERNAL LUMEN USE ONLY AND IS NOT TO BE DISSEMINATED OUTSIDE OF LUMEN WITHOUT AUTHORIZATION FROM RISK MANAGEMENT. DISSEMINATION OF THIS DATA OUTSIDE OF LUMEN WITHOUT AUTHORIZATION WILL BE CONSIDERED A VIOLATION OF COMPANY POLICY.

Where to Interconnect in Wyoming

Pinedale MEN & Scottsbluff MEN

Summary:

- Wyoming has 2 EVPL MENs spanning 2 LATAs and 7 wire-centers equipped for Ethernet
- LATAs in these MENs are 646 and 654

● Major Cities

MEN

- PINEDALE
- SCOTTSBLUFF

